

Installation Guide

AUSTRALIA 2009



WEATHERTEX[®]

Timber made perfect[™]

Contents

Introduction and Applications	i	Installation - Weathertex Weatherboards	14 - 16
Weathertex Product Range	1 - 2	Installation - Primelok Weatherboards	17
Weathertex Accessories Range	3 - 6	Installation - Wall Shingles	17
Fasteners and Gun Nailing	7	Installation - Weathergroove	18
Product Information	8 - 9	Installation - ExteriorBoard	19
General Requirements - All Products	10 - 11	Installation - ImpactBoard	20
Installation - Cavity Wall Systems	12 - 13	Warranty	21

Introduction and Applications

Weathertex® products are attractive and durable timber products.

They comprise a range of smooth and textured surfaces, precision milled Primelok® and Selflok® planks, grooved sheets with on and off stud joining systems and simulated shingles.

Weathertex products suit a variety of structural and decorative exterior and interior wall applications. Profiles and textures range from modern, federation and traditional to colonial building styles. They blend beautifully with other materials such as brick, other timber, glass, concrete and metal.

Developed and manufactured in Australia, Weathertex products are an exterior grade, timber weatherboard and panel product. They are made from Australian hardwoods, selected for durability. Weathertex Weatherboards and Architectural Panels are manufactured to comply with the requirements for Exterior Hardboard in AS/NZS 1859.4:Wet - Processed Fibreboard.

Weathertex products are 9.5mm thick. They are dense, tough and resistant to impact. They are accurately dimensioned and the long plank edges are lightly rounded or rebated for ease of handling and installation. Architectural Panel edges are square cut.

As Weathertex products are made from wood, they are easy to cut and machine with normal woodworking tools. Weathertex Weatherboards and Architectural Panels are easily fixed to timber and metal frames.

With the Weathertex Primelok fixing system, installation is up to 20% faster than similar width lapped Weatherboards, and the fixings are concealed.

Weathertex Weatherboards and Architectural Panels provide an excellent base for painting. They are supplied pre-primed on all surfaces, ready for finishing with exterior 100% acrylic latex or solvent-borne paints.

Weathertex products are ideal for:

- building extensions and upper storey lightweight construction,
- construction of new homes, transportable homes and kit homes,
- renovation of existing walls,
- gable ends,
- infill panels around windows, doors or in conjunction with brickwork and timber,
- garages and outbuildings,
- structural surfacing in high wind areas.



Quality
Endorsed
Company
ISO 9001 Lic1864
SAI Global

* Refer to Weathertex Manufacturer's Warranty Conditions

Weathertex Product Range

All Weathertex products have a thickness of 9.5mm.

WEATHERTEX WEATHERBOARDS

Smooth and textured surface planks for lapped applications. Prime sealed all over. 9.5mm thick.

CLASSIC

3660mm x 200mm

Smooth



3660mm x 300mm

Ruff-X (200mm only)



Ruff-Sawn



RUSTICATED

3660mm x 200mm

Smooth



Ruff-Sawn



SELFLOK WEATHERBOARDS

Selflok Weatherboards are routed during manufacturing with a self-locking feature to allow each board to accurately align itself above one another, providing a clean and neat finish. Prime sealed all over. 9.5mm thick.

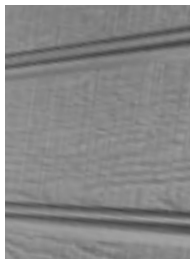
MILLWOOD

3660mm x 300mm

Smooth



Ruff-Sawn



OLD COLONIAL

3660mm x 300mm

Smooth



PRIMELOK WEATHERBOARDS

Smooth, textured and profiled planks which feature the Primelok® aligning spline for increased accuracy, up to 20% faster installation than similar width lapped planks, and concealed fixing. Prime sealed all over. 9.5mm thick.

CLASSIC

3660mm x 200mm

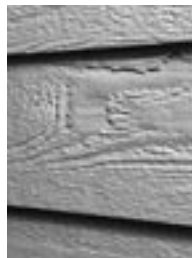
Smooth



Ruff-Sawn



Woodsman



BRAIDWOOD

3660mm x 200mm

Smooth



Ruff-Sawn



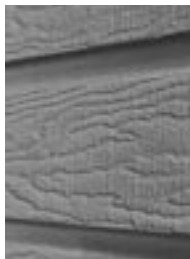
FEDERATION

3660mm x 170mm

Smooth



Ruff-Sawn



SHADOWOOD

3660mm x 170mm

Smooth



WEATHERTEX ARCHITECTURAL PANELS

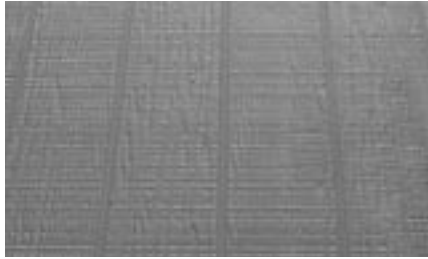
WEATHERGROOVE

Smooth, Ruff-Sawn and Woodsman surface texture with regular grooves. Rebated long edges combine with Weathergroove joiners to give a seamless vertical grooved wall. Prime sealed all over. 9.5mm thick.

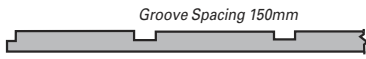
Smooth



Ruff-Sawn



Woodsman



3660mm x 1196mm
3050mm x 1196mm

2745mm x 1196mm
2440mm x 1196mm

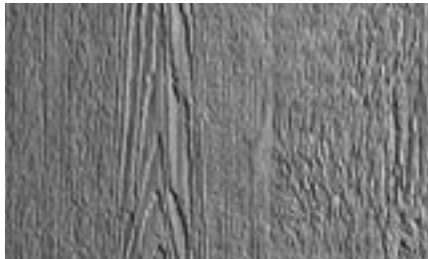
EXTERIORBOARD

ExteriorBoard offers the sought after modern express joint style by incorporating both vertical and horizontal expressed joints. Smooth and Woodsman surfaces. Prime sealed all over. 9.5mm thick.

Smooth



Woodsman (3660 x 1220mm only) (MTO)



3660mm x 1220mm
2745mm x 1220mm
2440mm x 1220mm
1830mm x 1220mm
1220mm x 1220mm
915mm x 1220mm



* Refer to the Weathertex website for the Weathertex 10 year Manufacturer's Warranty.

IMPACTBOARD

Strong robust sheets, smooth surface. Rebated long edges for seamless joins using the ImpactBoard joiner. Prime sealed all over. 9.5mm thick.

Smooth



3660mm x 1220mm

WALL SHINGLES

Regular vertically grooved Ruff-Sawn Weatherboards for overlapping shingles effect. Notched lower edge. 9.5mm thick.

Please note that wall shingles are supplied unprimed.



1195mm x 225mm

Weathertex Accessories Range

CORNER ACCESSORIES

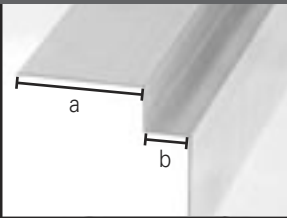
ALUMINIUM CORNERS

Weathertex Anodised Aluminium* Corners finish projects with smooth, clean and neat lines for a modern and professional end result to any corner.

Weathertex Aluminium Corners have several advantages. They are:



- lightweight but strong
- the inbuilt flashing prevents moisture penetration
- the aluminium can either be painted or left as a natural anodised finish to your preference

* Refer to notes on Anodised Aluminium on Page 6.

PRODUCT	LENGTH (mm)	SUITED TO:	DIMENSIONS (mm)	
SMALL INTERNAL ALUMINIUM CORNER	3660	Selflok Weatherboards, Weathergroove, ExteriorBoard	a = 59 b = 13	
LARGE INTERNAL ALUMINIUM CORNER	3000	Primelok Weatherboards, Rusticated, Classic Weatherboards	a = 59 b = 22.5	
SMALL EXTERNAL ALUMINIUM CORNER	3660	Selflok Weatherboards, Weathergroove, ExteriorBoard	a = 60 b = 14	
LARGE EXTERNAL ALUMINIUM CORNER	3000	Primelok Weatherboards, Rusticated, Classic Weatherboards	a = 60 b = 23.5	

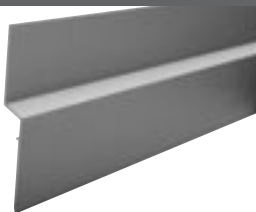
EXTERNAL CORNER PLUGS

Weathertex External Corner Plugs are designed to fit into the Weathertex Aluminium Corners, preventing creepy crawlies and moisture penetrating into the External Corners. The Weathertex External Corner Plugs will offer a clean smooth finish to your building projects.

PRODUCT		PRODUCT	
SMALL CORNER PLUG Suited to Small External Aluminium Corner		LARGE CORNER PLUG Suited to Large External Aluminium Corner	

ALUMINIUM Z FLASHING

Weathertex Anodised Aluminium* Z Flashing is designed to dimensionally compliment Weathertex Aluminium Corners. Installed horizontally on Weathertex Weathergroove Panels the combination of Z Flashing and Aluminium Corners professionally complete your project.

PRODUCT	SIZE	SUITED TO:	
ALUMINIUM Z FLASHING	Length: 1200mm Thickness: 1.2mm	Weathergroove	

* Refer to notes on Anodised Aluminium on Page 6.

JOINING ACCESSORIES


WEATHERTEX CONCEALED JOINERS

Weathertex Concealed Joiners allow on or off stud joining for our Weatherboard range, making joining Weatherboards almost invisible. Concealed joiners are easy to install and provide a neat, clean and professional finish, which is visually pleasing. It is recommended to use the correct concealed joiner and follow installation instructions when installing Weathertex for warranty purposes.

PRODUCT	SUITED TO:	
CONCEALED JOINER 170mm	Primelok 170mm Weatherboards	
CONCEALED JOINER 200mm	Classic 200mm Weatherboards, Primelok 200mm Weatherboards	
CONCEALED JOINER 300mm	Selflok 300mm Weatherboards	


EXTERIORBOARD DEEP CHANNEL JOINER

The Weathertex ExteriorBoard Deep Channel Joiner made from UV stabilized Black PVC provides easy installation for ExteriorBoard and offers the sought after modern express join style.

PRODUCT	SUITED TO:	
EXTERIORBOARD DEEP CHANNEL JOINER Length: 3660mm	ExteriorBoard	


IMPACTBOARD JOINER

Weathertex ImpactBoard Joiners are a specially designed PVC joiner creating a flush, smooth finish to any ImpactBoard project.

PRODUCT	SUITED TO:	
IMPACTBOARD JOINER Length: 3660mm	ImpactBoard	

IMPACTBOARD CORNER

Weathertex ImpactBoard Corners are a specially designed PVC corner system for a flush finish for ImpactBoard.

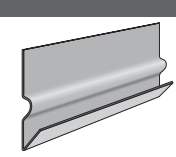

PRODUCT	LENGTH (mm)	
IMPACTBOARD CORNER	3660mm	

WEATHERTEX TRADITIONAL JOINERS

WeatherTex Traditional Joiners are white PVC for jointing all WeatherTex Weatherboards "off-stud". It is recommended to use the correct joiner and follow installation instructions when installing WeatherTex for warranty purposes.

PRODUCT	LENGTH (mm)	SUITED TO:
WEATHERBOARD OFF-STUD JOINERS	300 Smooth, 200 Smooth or Woodgrain	Classic 300mm Weatherboards Classic 200mm Weatherboards Primelok Classic 200mm 
RUSTICATED JOINERS	200 Smooth, 200 Ruff-Sawn	Rusticated Smooth Rusticated Ruff-Sawn 
MILLWOOD JOINERS	300 Smooth, 300 Ruff-Sawn	Millwood Smooth Millwood Ruff-Sawn 
OLD COLONIAL JOINERS	300 Smooth	Old Colonial Smooth 
BRAIDWOOD JOINERS	200 Smooth, 200 Ruff-Sawn	Braidwood Smooth Braidwood Ruff-Sawn 
FEDERATION JOINERS	170 Smooth, 170 Ruff-Sawn	Federation Smooth Federation Ruff-Sawn 
SHINGLE JOINERS	225	WeatherTex Wall Shingles 
3660 SMOOTH JOINERS	3660	ImpactBoard, ExteriorBoard 
WEATHERGROOVE JOINERS	2440, 2745, 3050, 3660	Weathergroove 

OTHER ACCESSORIES

PRODUCT	LENGTH (mm)	SUITED TO:
PRIMELOK STARTER STRIP	1830	WeatherTex Primelok Weatherboards 
CAVITY CLOSER	3660 Large 3660 Small	Classic 300 and 200mm Weatherboards, Primelok Weatherboards, Selflok Weatherboards, Weathergroove, ExteriorBoard, ImpactBoard 

SURROUNDING MATERIALS

Corrosion of aluminium may be exacerbated when contact is made with other metallic materials commonly used in construction.

Iron and Steel

Under humid conditions or areas close to the sea, the corrosion rate of aluminium may be accelerated when in contact with structural steel. To improve the performance of the aluminium product under these circumstances the steel should be coated.

Non-ferrous metals

Contact with copper and its alloys must also be avoided. Coating of these components is a satisfactory method of minimising this effect. *Note: there are various timber products which have been treated with metallic compounds which may promote corrosion under this system. Check this before using.*

Non-metals

Contact with fresh concrete, mortars, plasters and fibre cement product should be avoided. These materials can release traces of alkaline materials which can cause a rapid corrosive staining of the aluminium product.

Damp or unseasoned timber may also cause a corrosive effect on the aluminium. This should be primed with a zinc chromate undercoat and sealed with a suitable top coat.

Adhesives should contain less than 0.1% chlorides.

WeatherTex aluminium products have been anodised to provide a protective coating to the corrosive elements mentioned above.

MAINTENANCE

Standard maintenance of exposed anodised aluminium corners should include periodic cleaning on at least a six month interval. In an industrial or marine location this frequency should increase because of the more severe environment. The following cleaning method is recommended.

- Clean with a dilute solution of mild liquid detergent at room temperature.
- Use a soft bristle brush or cloth. Do not use abrasive tools or cleaners. After cleaning, rinse thoroughly with fresh water.
- Do not use strong solvent, acidic or alkaline cleaners. Where the use of solvent is required, such as cleaning paint spills, use Methylated Spirits only. Minimise the contact time as much as possible and rinse thoroughly with fresh water.

STORAGE AND HANDLING

Anodised aluminium products should be stored in a dry and flat position away from any potentially corrosive materials. Timber or soft bearers at a distance no more than one metre apart should be used to support the product. Prolonged exposure to moisture will promote corrosion. This should be avoided and if experienced, immediately correct. The products are subject to damage or could damage other materials they are brought in contact with.

The edges and cut corners of the product may cause personal injury if brought into contact with the body. Wear glasses, gloves and protect skin where possible.

PAINTING

Anodised aluminium products must be coated with a suitable etch primer prior to painting, then normal commercially available top coats are able to be applied. Please contact the paint manufacturer for advice with these coating systems.

Fasteners

For ease of installation, the following accessories are available through Weathertex stockists.

Product	Length (mm)	Suited to:
Nails		
WEATHERTEX NAILS	50 x 2.8mm countersunk head galvanised nail	Classic, Rusticated, Selflok, Shingles, Architectural Panels
FLAT HEAD NAILS	50 x 2.8mm flat head galvanised nail	All Primelok Weatherboards fixed onto softwood frames
	60 x 2.8mm flat head galvanised nail	For Weatherboards fixed onto softwood frames on cavity system

Product	Suited to:
Screws	
ITW Buildex Countersunk Rib Head Wingtek Screw (class 3) No.8 - 18x35mm	Fixing Weathertex Weatherboards and Architectural Panels to 1.0 - 2.5mm steel frames
ITW Buildex FibreZips M5 - 18 x 30mm Countersunk Head	For fixing Primelok, Selflok to steel frames 0.55 - 1.0mm thick

Notes:

- All fasteners (nails and screws) must be galvanised or suitably coated to resist corrosion for external application. (Australian Standard AS 3566, Class 3 for screws).
- Coastal locations can be very corrosive to fasteners, especially within distances of up to 500m from the sea. When installed in high corrosion zones, fasteners (nails and screws) must be made of materials appropriate to the desired life of the system and geographical location. Stainless Steel Nails and Class 4 Screws may be necessary in these zones. The advice of the fastener supplier should be sought.
- The fasteners specified are minimum lengths required for each specific profile. If there is additional material between the Weathertex and the stud eg packing, then the fastener length should be increased to provide the same fastener depth in the stud. See Cavity Fixing System Installation Instructions on Page 12.

Gun Nailing

Gun nailing can be used as an alternative to specified hand driven nails. Generally, gun nails should have equivalent dimensions, head size, etc. to hand driven nails and must be galvanised or suitably coated for external use.

Suitable nail guns for the installation of Weathertex with the nails below includes, but may not be limited to:

- DUO-FAST – KD665A Coil Nailer
- STANLEY BOSTITCH – N75C-1 (With dial a depth)
- PASLODE – Impulse Compact Nailer B20544
- MAX – CN565S
- SENCO - SCN56

Supplier	Gun Model	Nail
For Softwood Frames		
DUO-FAST	C25-45-RGD	45mm ring shank galvanised nail
	C25-50-RGD	50mm ring shank galvanised nail
STANLEY BOSTITCH	AC45R250-GAL	45mm ring shank galvanised nail
	AC50R250-GAL	50mm ring shank galvanised nail
PASLODE	B20443	50mm ring shank D-HEAD galvanised nail
	D41580	50mm ring shank stainless steel nail
For Hardwood Frames		
DUO-FAST	C25-45-RGD	45mm galvanised flat head nail
	C25-50-RGD	50mm galvanised flat head nail
STANLEY BOSTITCH	AC45P250-GAL	45mm galvanised flat head nail
	AC50P250-GAL	50mm galvanised flat head nail
PASLODE	B20565V	Impulse 50 x 2.87mm mechanical gal value pack
	D41600	50mm screw shank stainless steel nail
For Steel Frames (1.0 - 2.0mm for use in Geographic regions up to C2 only)		
DUO-FAST	C25/32 SHDAC	32mm screw hardened dactrotised coil nail (Primelok, Selflok Profiles)
	C26/40 SHDAC	40mm screw hardened dactrotised coil nail (Classic lapped profiles)

Notes:

- Nail guns must be fitted with a flush drive attachment.
- Installers using gun nailing should assure themselves that the appearance of the finished nailed Weathertex is suitable for the intended use. Generally, head sizes in excess of 6mm or T and D headshape nails may not produce a satisfactory finish on Selflok profiles or any other face fixed profiles eg. Weathergroove.
- Fasteners MUST NOT be overdriven. This can reduce the holding capacity of the Weathertex. If the nailing depth cannot be adequately controlled when gun nailing, then it is preferable to under-drive and tap home with a hammer.

Product Information

DIMENSIONS AND PACKAGING

Dimensions and Pack Contents

WEATHERBOARDS	Length mm +3mm	Width mm +1mm	Units per pack	Contents m ²
Classic	3660	197	144	103.8
	3660	298	96	104.7
Rusticated	3660	197	144	103.8
Millwood	3660	298	96	104.7
Old Colonial	3660	298	96	104.7
Wall Shingles	1195	225	120	32.3
PRIMELOK WEATHERBOARDS	Length mm +3mm	Width mm +1mm	Units per pack	Contents m ²
Classic	3660	197	144	103.8
Braidwood	3660	197	144	103.8
Federation	3660	170	168	104.5
Shadowood	3660	170	168	104.5
ARCHITECTURAL PANELS	Length mm +3mm	Width mm +1mm	Units per pack	Contents m ²
ExteriorBoard				
12 x 4	3660	1220	24	107.2
9 x 4	2745	1220	24	80.37
8 x 4	2440	1220	24	71.4
6 x 4	1830	1220	24	53.6
4 x 4	1220	1220	48	71.4
4 x 3	1220	915	48	69.12
Weathergroove				
12 x 4	3660	1196	24	105.1
10 x 4	3050	1196	24	87.5
9 x 4	2745	1196	24	78.8
8 x 4	2440	1196	24	70.0
ImpactBoard				
12 x 4	3660	1220	24	107.2

PHYSICAL PROPERTIES

Physical Properties

Property	Unit	Typical Values
Density	kg/m ³	990*
Mass/Unit Area	kg/m ²	9.4
Modulus of Rupture	MPa	30
Modulus of Elasticity	MPa	4500
Moisture content ex mill	%	7.5
Hygro-Expansivity = change in face dimensions over the range of 50% to 90% relative humidity	%	0.25

* Note: ImpactBoard has a guaranteed minimum density rating of 1025 kg/m³.

THERMAL INSULATION

Thermal Insulation

The thermal conductivity of Weathertex Weatherboard is 0.195W/mK. The thermal resistance R-value for the 9.5mm thickness is 0.05m²K/W.

ENERGY EFFICIENT HOUSING: is an initiative of the Australian Greenhouse Office and has been adopted by most States. House designs are assessed on a "star" rating principle (1 to 5 stars with 5 being the best). A Weathertex clad timber frame, internally lined and with various levels of insulation within the cavity will contribute to the achievement of energy efficiency.

Insulation within wall framing cavity	R-Value of Total Wall Km ² /W
Nil	0.4
Double sided perforated reflective foil laminate (rfl) dished between studs	1.3
R1.5 bulk insulation between studs with breather foil or building paper under Weathertex	1.7
R1.8 bulk insulation between studs with breather foil or building paper under Weathertex	1.9

SOUND TRANSMISSION

A wall consisting of 100mm x 50mm timber studs at 450mm centres, clad with Weathertex and lined internally with 5.5mm hardboard, was tested at the NATA registered, Building Material Acoustical Laboratory, Concord, NSW – STC 35. The sound transmission class can be increased to around STC 38-40 by using fibreglass or insulating board beneath the internal lining. Further STC data can be obtained in the "Weathertex and Fire" Factsheet.

HIGH WIND AREAS

Weathertex direct fixing system have been subject to simulated wind suction forces at the Cyclone Testing Station, James Cook University, Townsville, Queensland, and in our own laboratory. When fixed as specified to timber studs the Weathertex profiles are suitable for use as shown. Wind classifications are as defined in AS4055-2006 "Wind Loads for Housing" and calculations use a local pressure factor for planks within 1200mm of the building edge. **Data for fixing to steel frames is also available on request.**

High Wind Areas

Weathertex Product	Highest Wind Classification				
	Stud Centres(mm)	Regions A & B		Regions C & D	
		Unlined Wall	Internally Lined	Unlined Wall	Internally Lined
Weathertex Weatherboards					
200mm Classic, Rusticated, Millwood and Old Colonial	450	N5	N5	C2	C3
	600	N4	N4	C1	C2
Wall Shingles	450	N5	N5	C2	C3
	600	N2	N2	n/a	n/a
Weathertex Primelok Weatherboards					
Federation and Shadowood	450	N5	N5	C2	C3
	600	N4	N4	C1	C2
Classic and Braidwood	450	N4	N4	C1	C2
	600	N2	N3	n/a	C1
Weathertex Architectural Panels					
ExteriorBoard, ImpactBoard and Weathergroove - Joined OFF stud	450	N4	N4	C1	C2
	600	N2	N3	n/a	C1
ExteriorBoard, ImpactBoard and Weathergroove - Joined ON stud	450	N5	N5	C2	C3
	600	N3	N4	n/a	C2

AS4055-2006 Wind Classification N3 is equivalent to a maximum ultimate limit state design gust wind speed of 50m/s (NZS 3604:1999 classification very high). N4 and N5 are equivalent to 61m/s and 74m/s respectively.

WEATHERTEX AS STRUCTURAL BRACING

Several Weathertex wall-cladding systems have been tested for use as structural bracing when fixed using the direct fix method of installation. The data given below are for use with limit state design criteria specified in Australian Standard AS 1684-1999, Residential timber-framed construction. Tie-down fixing and other construction detail must be as specified in AS 1684 for the appropriate wind classification.

Weathertex Structural Bracing

Jointing Method	Nail Spacing Top & Bottom Plates (mm)	Nail Spacing Vertical Sheet edges (mm)	Nail Spacing Intermediate studs and nogging (mm)	Bracing Capacity (kN/m)	Type A Bracing Units per 1.2m wall length
On-stud	150	150	300	4.0	1.6
Off-stud	150	N/A	300	1.8	0.7

Note: If additional bracing strength is required from an off-stud join please call customer service on 1800 040 080 for information.

WEATHERTEX ARCHITECTURAL PANELS

Weathertex Architectural Panels products when fixed directly as specified have the bracing capacity as shown. Minimum wall length to achieve the stated capacity is 900mm for on-stud construction and 2400mm for off-stud construction. In off-stud construction the length of the bracing wall used in the calculation must have a stud at each end of the wall to which the panels are nailed.

CUTTING

Weathertex products are easy to cut and shape with a normal hand or power saw. Weathertex may be stacked two or three high for multiple cutting. Primelok Weatherboards should be cut individually to protect the aligning spline. Where required, edges may be trimmed with a smoothing plane or sandpaper. Holes are easily drilled with high speed drills or clean cutter bits.

STORAGE

Weathertex products should be stored flat, under cover and on timber bearers spaced at maximum centres of 600mm.

When storing outside, keep the stack clear of the ground and cover with waterproof materials to prevent water staining.

HEALTH AND SAFETY

The normal health and safety precautions should be taken when working with wood panel products. Machine tools should be fitted with dust extractors and work areas kept clean. If dust levels exceed Worksafe Australia Standards the wearing of a dust mask (AS 1715 and AS 1716) and safety glasses (AS 1337) is recommended. Storage and work areas should be adequately ventilated.

For more information please telephone 1800 040 080 for your copy of the Weathertex Exterior Cladding Material Safety Data Sheet.

General Requirements ALL PRODUCTS

Note: All drawings are for demonstration purposes only. Cavity fixing diagrams and vapour permeable sarking have been omitted for clarity.

SITE AND FOUNDATION

Foundation design must comply with AS 2870 "Residential Slabs and Footings - Construction" and the BCA. The grade of adjacent finished ground must slope away from the building to avoid the possibility of water accumulating.

MOISTURE MANAGEMENT

It is the responsibility of the specifier to identify moisture related risks associated with any particular building design.

Wall construction design must effectively manage moisture, considering both the interior and exterior environments of the building, particularly in buildings that have a high risk of wind driven rain or that are artificially heated or cooled. Adequate ventilation must be provided to ensure that wall cavity and the back of the Weathertex board remains dry at all times. In addition all wall openings, penetrations, junctions, connections, window heads, sills and jambs must incorporate appropriate flashing for waterproofing. The other materials, components and installation methods used to manage moisture in the walls, must comply with the requirements of relevant standards and the BCA.

FRAMING

Timber or metal frames shall comply with the Building Code of Australia (BCA). Where applicable, timber frames shall be in accordance with Australian Standard 1684 - Residential Timber - Framed Construction. Metal frames should be erected in accordance with the manufacturer's requirements. Frames shall be straight and true with studs at a maximum of 600mm centres. Timber shall be seasoned as unseasoned timber is prone to shrinkage and can cause sheets and frames to move.

DAMP-PROOF COURSES (DPC)

Lower framing timbers should be isolated from ground moisture by suitable damp-proof courses or termite shielding. Similarly, Weatherboards or Architectural Panels should not be placed in direct contact with masonry, brickwork or concrete. Where necessary use strips of polyethylene to isolate the materials.

Allow at least 150mm clearance between the bottom edge of Weathertex Weatherboards and Architectural Panels and paved surfaces which are exposed to the weather and at least 225mm clearance to unprotected ground.

FLASHING AND WEATHERPROOFING

Before fixing Weathertex, all wall openings, vertical and horizontal joins, sills, heads and corners should be weatherproofed with flashing to comply with BCA. Flash horizontal joins between Architectural Panels with Weathertex Aluminium Z Flashing.

On walls projecting from the roof line in upper storey construction, keep the bottom edge of Weathertex Weatherboards 50mm clear of the lower storey roof claddings. Weatherproof with an approved flashing.

If using a vapour barrier, such as plastic film or aluminium foil, place it on the warm side of the wall frame to avoid condensation within the wall cavity, ie. under internal linings in regions which experience cold temperature conditions. Please obtain specialist advice when locating vapour barriers in buildings in hot or tropical zones or where cooling or humidity control equipment is installed.

For Direct Fix: Vapour permeable sarking must be used directly under Weathertex Weatherboards, especially on walls subject to high wind conditions and wind updraughts.

For Cavity Fix: A suitable breather membrane shall be used (see Installation Cavity Wall Systems Page 12).

CORNER TREATMENTS

ALUMINIUM CORNERS

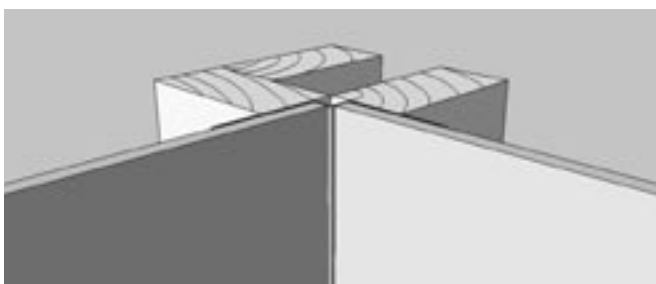
Aluminium, like all metals, is subject to thermal expansion/contraction. As a guide it is recognised that aluminium moves by as much as 0.1% of its length over a temperature change of 30 degrees celsius. For this reason it is recommended that expansion gaps be used when working over lengths of greater than 6 metres. This also applies for ends which are to be brought to a rigid stop.

Internal and external angles can be fixed with hot dipped galvanised flat head nails and then permanently fixed by the Weathertex fasteners specified for each profile penetrating the flashing wings.

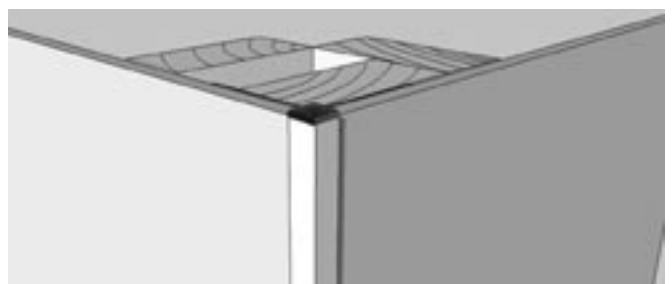
It is best to leave a small expansion gap (1 to 2mm) between the Weathertex and Aluminium Corner, which can be filled with a flexible sealant such as Sikaflex Pro 2HP or Fuller Super Seal HPR25 if required.

Always wear safety glasses when cutting aluminium corners.

ARCHITECTURAL PANELS - Small Internal and External Aluminium Corners

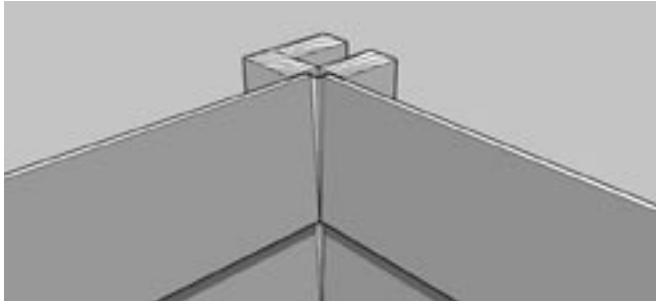


Aluminium Internal Corner

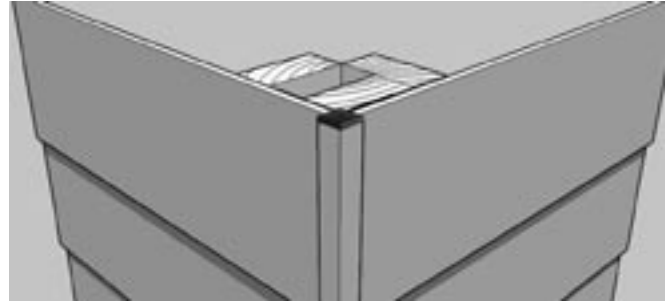


Aluminium External Corner

WEATHERBOARDS - Large Internal and External Aluminium Corners



Aluminium Internal Corner

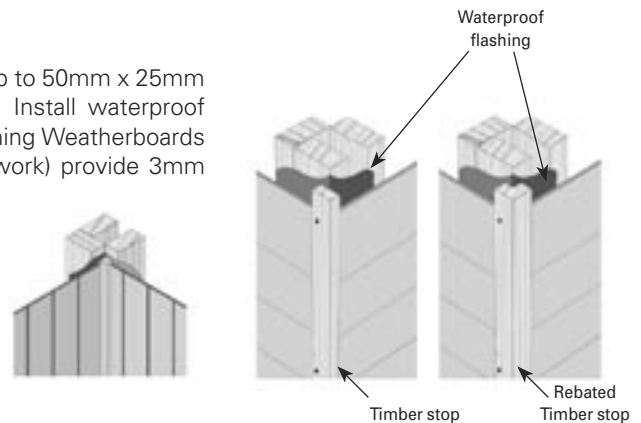


Aluminium External Corner

TIMBER BOX CORNERS

External: Weatherboards and Architectural Panels may be butted up to 50mm x 25mm finish size or rebated primed timber stops. Prime any cut ends. Install waterproof flashing around corner studs prior to fixing timber stops. * When joining Weatherboards and Architectural Panels up to other materials (for example brickwork) provide 3mm clearance.

Internal: Butt Weatherboards and Architectural Panels up to 25mm x 25mm finish size primed timber stops. Prime any cut ends with solvent-based wood primer. Alternatively, Weatherboard and Architectural Panels ends may be scribed and cut to fit the planks on the adjoining wall.



PAINTING AND MAINTENANCE

ALWAYS PAINT WEATHERTEX WEATHERBOARDS, ARCHITECTURAL PANELS AND WEATHERTEX SHINGLES WITHIN 60 DAYS OF FIXING. FAILURE TO OBSERVE THIS REQUIREMENT MAY RESULT IN POOR ADHESION OF THE TOP COAT AND MAY VOID WARRANTY.

PRIMING

Sawn edges of Weatherboards and Architectural Panels which are exposed, butt joined on studs or meet other materials such as timber stops must be primed with solvent-based or acrylic tannin resistant wood primer. A sprayable primer is the most efficient method.

To comply with good building practice timber mouldings, including corner stops and trims, should be primed with exterior, solvent-based or acrylic tannin resistant wood primer before installation.

PAINT COLOUR

Paint colour can have an effect on the performance of Weathertex products. As Weathertex is a timber product, its dimensions will change with changes in moisture content. **Dark paint colours can allow surfaces in warmer climates to become very hot in direct sunlight (up to 80°C)** leading to loss of moisture and subsequent shrinkage of the Weatherboard. **Plastic joint trimmers can also distort at temperature above 70°C.** Light paint colours will lead to better thermal efficiency of the building and minimise problems due to moisture change.

PREPARATION

Surfaces should be free from dirt, dust or grease. Set fasteners flush with the surface and where necessary fill any holes with proprietary filler. Lightly sand any nibs or blemishes which have occurred during fixing.

PAINTING

The primed surface of Weatherboards and Architectural Panels are suitable for the application of exterior grade 100% acrylic or solvent-based paint systems.

Unprimed products, such as Weathertex Wall Shingles, should be painted with an exterior 100% acrylic paint which is suitable for direct application to timber. Light colour paints should be tannin blocking. The paint manufacturer's recommendations on paint suitability, mixing and application, should also be followed.

For Acrylic and Solvent-based finishes follow manufacturers instructions.

MAINTENANCE

Regularly wash the painted surface with water to remove dirt and grime and to improve the performance of the coating. Generally, exterior surface coatings deteriorate by chalking rather than flaking. When repainting becomes necessary and the surface is unbroken, wash down with water. Remove all loose chalk, dirt and dust by sanding, and dust off. Make good any defects and fill where necessary. Apply a minimum of two coats of paint in accordance with the paint manufacturer's recommendations.

Installation CAVITY WALL SYSTEMS

To provide the best protection for your wall against moisture related problems Weathertex highly recommends the use of a cavity fixing system. A cavity system creates a space within the wall that allows airflow to remove any moisture that accumulates in this space either from wind driven rain or condensation.

Fixing your Weathertex cladding using the cavity system provides the best defence for your internal lining, frame, insulation and cladding against the damaging effects of moisture.

If the cavity system is not the chosen method of construction, sufficient ventilation within the wall must be otherwise provided or warranty may be void.

When designing for cold climates or buildings with a high internal vapour pressure, a vapour barrier on the interior side of the frame may be required in addition to the breather membrane on the exterior face of the frame. In such cases, the advice of the vapour barrier manufacturer should be sought.

BREATHER MEMBRANE

A breather membrane is a physical barrier between the studs and the Weathertex cladding. Specifically designed to allow water vapour to pass through, the breather membrane holds the insulation in place and affords effective protection during construction and for the life of the building against wind driven rain, snow or dust.

When installing Weathertex using the cavity installation method, in accordance with AS/NZS 4200.1, the chosen breather membrane must:

- Be a non-reflective type,
- Have medium to high vapour permeability (A vapour resistance of less than 0.5MN_s/g),
- Provide a high water barrier,
- Have a flammability index of no more than 1.

Weathertex provide and recommend Weathertex Wrapshield breather membrane (breather foils are not suitable for use in the Cavity Wall Systems).

CAVITY BATTENS

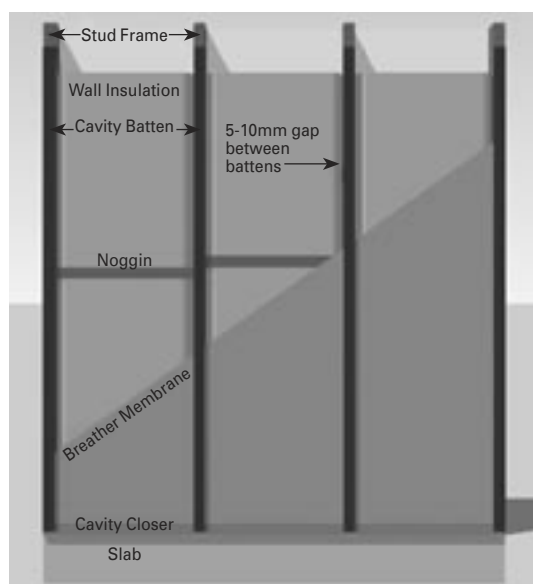
Cavity battens provide the separation between the breather membrane on the wall frame and the cladding. Cavity battens must be installed onto each stud and must be:

- A minimum of 9.5mm thick; and,
- At least as wide as the width of the studs; and,
- Fixed to the studs using a minimum 30 x 2.8 countersunk head galvanised nail at 800mm centres prior to fixing cladding (this will assist in maintaining them on the frame and keeping them straight),
- Butt joined leaving a 5-10mm gap.

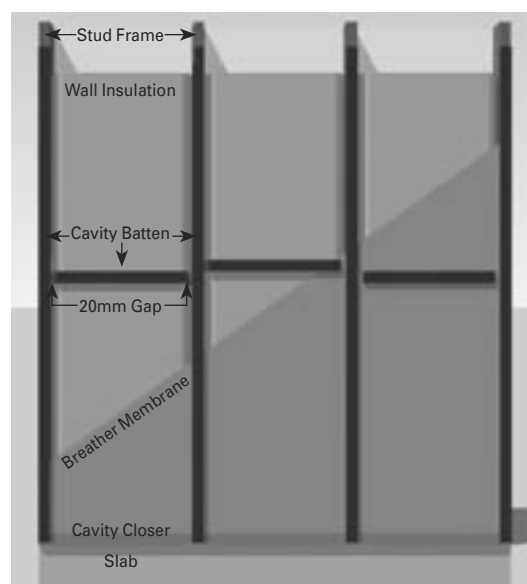
Weathertex provides and recommends the use of Weathertex cavity battens which are 1200 x 45 x 9.5mm.

When installing Weathertex Weatherboards cavity battens must be installed onto all studs.

When installing Weathertex Sheets or Architectural Panels, cavity battens must be installed onto all studs and noggings. Ensure a 20mm gap between noggling battens and stud battens to allow for drainage of any moisture.



Cavity system diagram for Weatherboards



Cavity system diagram for sheets and panels

CAVITY CLOSER

To stop vermin and other material entering the cavity, the base of the cavity must be sealed using the Weathertex cavity closer. Designed to not interrupt airflow in the cavity, a cavity closer strip must be installed at the base of the wall and above window heads and inter-storey flashings.

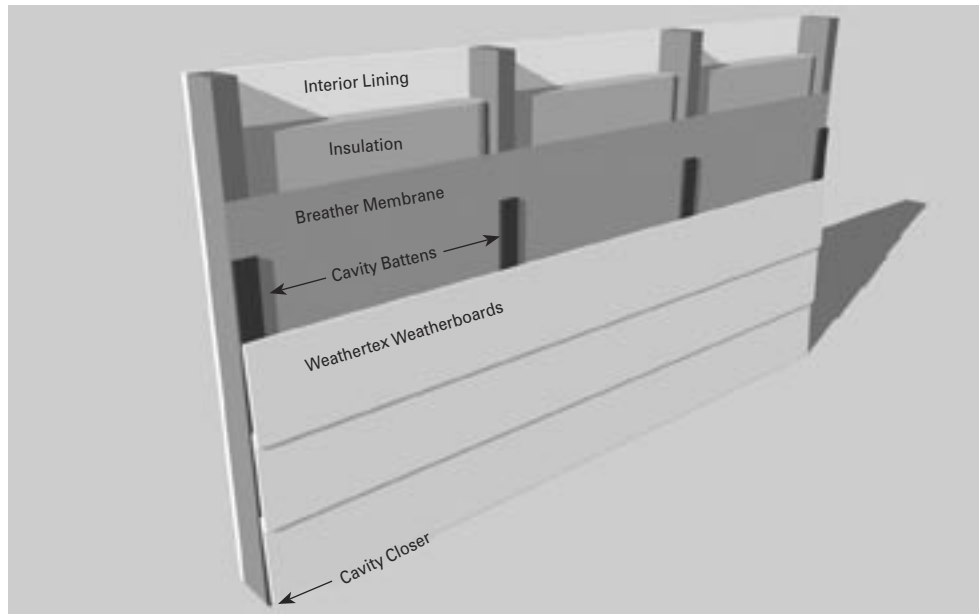
Fix the cavity closer to the base plate at 300mm centres along the closer with 30 x 2.8 flat head galvanised nails. Butt-join cavity closer ends and ensure the closers are fixed in a straight, level line. It is important that the openings in the cavity closer are kept clear and unobstructed to allow free drainage and ventilation of the cavity.

For Classic 300 and 200mm Weatherboards, and Primelok Weatherboards use 20mm Cavity Closer.

For Selflok Weatherboards, Weathergroove, ExteriorBoard and ImpactBoard use 10mm Cavity Closer.

INFILL INSULATION

Care should be taken when installing bulk insulation to ensure the stud cavity is not over-filled. Over filling the stud cavity with bulk insulation will impinge in the cavity created by the cavity battens and hence reduce its effectiveness, and may void warranty.



FIXINGS

When installing Weathertex using the cavity installation system, fixing lengths must be increased to 60mm. See fixings table for recommended fixings.

INSTALLATION OF WEATHERTEX WEATHERBOARDS AND ARCHITECTURAL PANELS USING THE CAVITY FIXING SYSTEM

Once the cavity system is established on the frame, follow Weathertex's direct fix instructions to fix the cladding to the battens.

Installation WEATHERTEX WEATHERBOARDS

PREPARATION

Set a horizontal datum or base line around the perimeter of the building. Mark with nails and string line.

Measure the wall height from the datum and determine the number of Weatherboard rows.

WEATHERBOARD COVERAGE

The table below shows the number of Weatherboard rows to cover walls of a given height. The information is based on the average width of the Weatherboard and the minimum recommended lap.

Weathertex Millwood, Old Colonial and all Primelok profiles have set Weatherboard laps. The top row of Weatherboard may require cutting to fit to the eaves.

The lap on Weathertex Classic Weatherboards and Wall Shingles may be increased to give equal width rows over the wall height.

Example:

- 200mm Weathertex Classic Weatherboards are selected to cover an actual wall height of 2570mm.
- 15 rows will cover 2675mm, a height difference of 105mm.
- As 15 rows have 14 Weatherboard laps, divide the height difference by 14; ie. $105\text{mm} / 14 = 7.5\text{mm}$.
- With a minimum lap of 20mm. The actual lap becomes $20\text{mm} + 7.5\text{mm}$ lap difference ie. 27.5mm .
- At the wall/eave intersection fix a timber cover strip, equal in width to the actual lap.

WALL HEIGHT COVERAGE

Profile	Weathertex Weatherboard				Selflok	Primelok	
	Classic 200	Classic 300	Rusticated	Wall Shingles	Millwood	Classic	Federation
					Old Colonial	Braidwood	Shadowood
Weatherboard width	200	300	200	225	300	200	170
Weatherboard lap	20	20	25	25	19	25	25
Number of rows	Wall height coverage – mm						
1	197*	298*	197*	225*	298*	197*	168*
2	374	576	369	425	577	369	311
3	551	854	541	625	856	541	454
4	728	1132	713	825	1135	713	597
5	905	1410	885	1025	1414	885	740
6	1082	1688	1057	1225	1693	1057	883
7	1259	1966	1229	1425	1972	1229	1026
8	1436	2244	1401	1625	2251	1401	1169
9	1613	2522	1573	1825	2530	1573	1312
10	1790	2800	1745	2025	2809	1745	1455
11	1967	3078	1917	2225	3088	1917	1598
12	2144	3356	2089	2425	3367	2089	1741
13	2321	3634	2261	2625	3646	2261	1884
14	2498	3912	2433	2825	3925	2433	2027
15	2675	4190	2605	3025	4204	2605	2170
16	2852	4468	2777	3225	4483	2777	2313
17	3029	4746	2949	3425	4762	2949	2456
18	3206	5024	3121	3625	5041	3121	2599
19	3383	5302	3293	3825	5320	3293	2742
20	3650	5580	3465	4025	5599	3465	2885

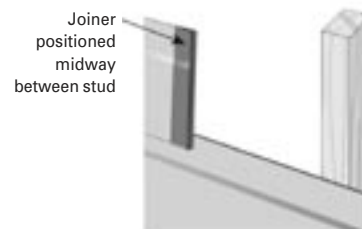
*Average width

USING TRADITIONAL JOINERS

Form joins between Weatherboard ends using joiners selected to suit the particular product. Refer to "Accessories".

Stagger joins randomly throughout the wall. Joins should be formed midway between the studs. When fitting Weatherboards, bring the ends into moderate contact with the splayed edges or nibs within the joiner. Do not force ends tightly together.

Simply cut joiners to fit at heads, sills and eaves. When using joiners there is no need to prime cut ends of the Weatherboards.



Notes:

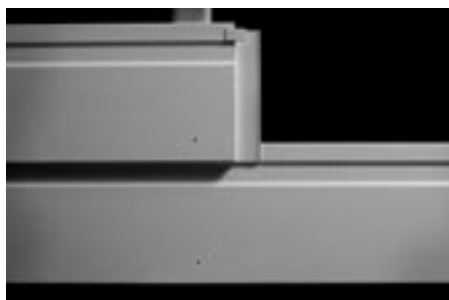
- 1) On first row of Weathertex Rusticated remove leg gauge from back of joiner.
- 2) To fit joiners to cut ends of Primelok Weatherboards it is necessary to trim back the plastic spline.

CONCEALED JOINERS

When using the concealed joiner the following instructions MUST be followed:

1. **Any cut end must be primed with a solvent-based exterior wood primer or an acrylic tannin resistant wood primer.**
2. Insert the primed butt edge of the Weatherboard into the concealed joiner, resting the bottom edge on the base and locking into position under the top flange. The edge of the Weatherboard should be in moderate contact with the centre nibs within the joiner. Do not force ends tightly together. The top flange will be hidden by the overlap of the board.
3. **Using a caulking gun, run a line of quality, flexible, paintable acrylic sealant up the length of the concealed joiner. Always follow the sealant manufacturer's application instructions.**
4. Insert the primed edge of the next Weatherboard into the other side of the joiner against the centre nibs. A 2-3mm gap will be left when both ends are in contact with the centre nibs.
5. Fasten the Weatherboard to the wall at each stud in accordance with product requirements.
6. After drying, use a sharp blade to remove the excess sealant so the join is clean and flush with the Weatherboards.

Notes: When installing Primelok Weatherboards it may be necessary to trim back the plastic spline to fit joiners.



Step 2



Step 3



Step 4



Step 5



Step 6

BUTT-JOINING ON STUD

Weatherboards should ONLY be butt-joined over studs on short lengths of wall (up to 5.5m long).

Cut ends must be primed with a solvent-based exterior wood primer or an acrylic tannin resistant primer. Bring ends into moderate contact with one another and fasten both ends to the stud. Movement of Weatherboards due to moisture changes may cause butt joints to open up after installation, particularly on longer wall lengths in full sun that are painted in darker colours. Gaps should be filled with a flexible sealant such as Sikaflex PRO 2HP or Fuller Super Seal HPR25.

Installation WEATHERBOARDS

A GUIDE FOR: Classic and Rusticated

First Row: Trim between the ends of bearers to enable the fixing of a Weathertex strip and the first plank. Fix a 35mm x 9.5mm strip of Weathertex Weatherboard 5mm up from the datum.

Rest the first Weatherboard on the datum line nails. Fasten the bottom edge through the starter strip into the timber framing. Fit joiners as work proceeds.

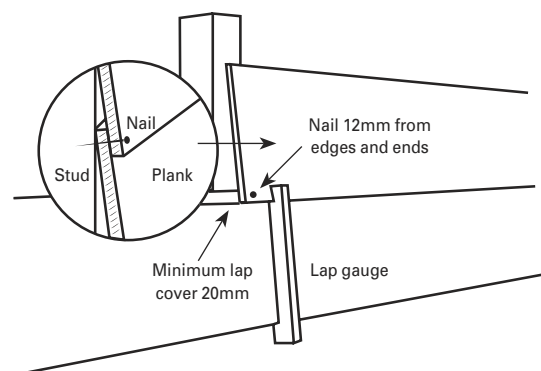
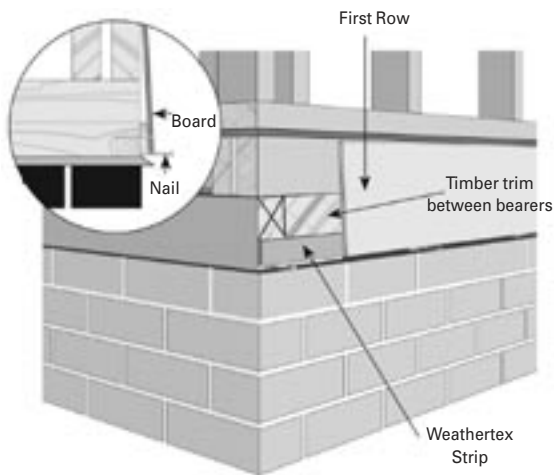
Successive Rows: Use the storey rod, lap gauge or Joiner to position Weatherboards and maintain uniform rows. Check rows for level.

Fastening: Nail Weatherboards to timber frames with Weathertex nails. Use screws when fixing to light gauge metal frames. Refer to "Accessories" for fastener types and sizes.

At laps, fasten through both Weatherboards into the stud. One fastener per stud, located at least 12mm from edges and ends.

(NOTE THAT PRIMELOK WEATHERBOARDS SHOULD NOT BE FIXED IN THIS MANNER - see Primelok Installation)

Drive Weathertex nails flush with the plank surface. No punching or stopping up is required. Screws for metal frames may be driven up to 2mm below the plank surface and filled with proprietary exterior grade filler.



Installation SELFLOK WEATHERBOARDS

A GUIDE FOR: Millwood and Old Colonial

First Row: Rest the rebated edge of the first row of Weatherboards on datum line nails.

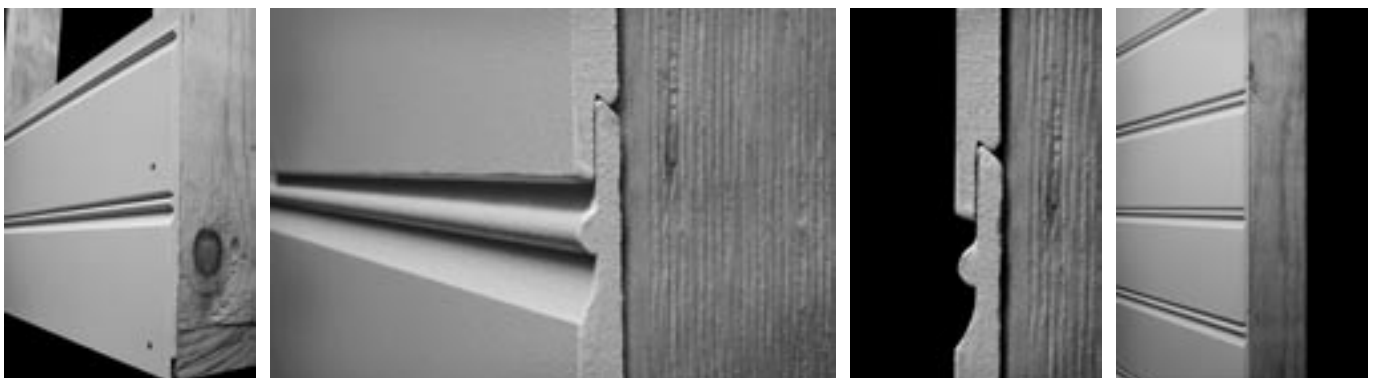
Fasten Weatherboards directly to the frame with two fasteners at each stud. Keep fasteners 30mm up from the bottom edge. Fit joiners as work proceeds.

Successive Rows: Rest the rebated edge of Weathertex Millwood Weatherboards on the row below. The selflok joint provides a 20mm overlap.

Fastening: Nail Weatherboards to timber frames with galvanised Weathertex nails. Use screws when fixing to light gauge metal frames. Refer to "Accessories". Fix with two fasteners at each stud. Keep fasteners 12mm minimum from ends, 30mm up from lower Weatherboard edges and approximately 140mm apart.

DO NOT NAIL THROUGH THE SELFLOK OR MILLED SECTIONS OF WEATHERTEX MILLWOOD PLANKS AND OLD COLONIAL.

Drive nails flush with the Weathertex Millwood Weatherboard surface. Set screw heads up to 2mm below the surface and fill with proprietary exterior grade filler.



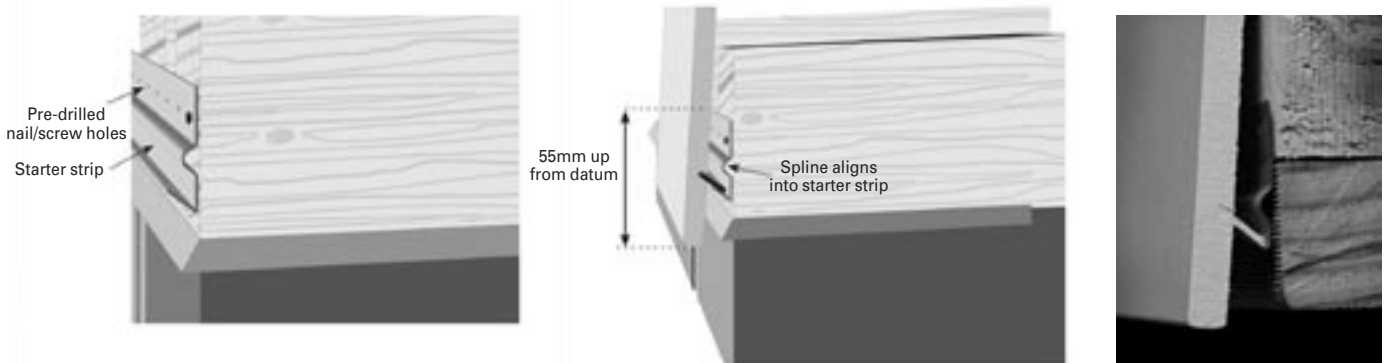
Installation PRIMELOK WEATHERBOARDS

A GUIDE FOR: Classic, Braidwood, Federation, Shadowood

Starter Strips: Fix the Weathertex Primelok Starter Strips to the frame so that the top edge of the strip is 55mm above the datum. Use 30mm x 2.5mm galvanised flat head nails for timber frames or No. 8 x 12mm pan head self-drilling screws for metal. Screws should be coated to resist corrosion.

Space fasteners at 300mm centres along the strips. Butt join starter strip ends together and ensure the strips are fixed in a straight, level line.

First Row: Position the first Weatherboard so that the spline locks over the starter strip. Press the Weatherboard down into the strip and fasten along the top edge of the board to every stud. Keep fasteners 15mm from the top edge. Continue fixing the first row and position joiner over adjoining Weatherboard ends and between the starter strips. To fit join to cut ends, trim back the spline at the back of the Weatherboard using a hacksaw or sharp knife.

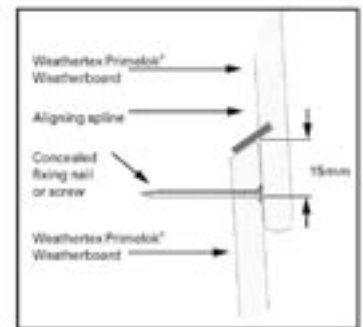


Successive Rows: Simply position each Weatherboard so that the spline locks over the splayed top edge on the preceding row. Press the Weatherboard down and fix along the top edge at every stud. Check rows for level.

Nail Weatherboards to timber frames with galvanised flat head nails. Use screws when fixing to light gauge metal frames. Refer to "Accessories".

Fix with one fastener at each stud and at all Weatherboard row ends. Commence fixing at one end of the Weatherboard and work along the edge. Alternatively, start midway along the Weatherboard and work outwards towards the ends.

Keep fasteners 15mm down from the top edge so that they will be hidden by the overlapping Weatherboard. Drive fasteners flush with the Weatherboard surface.



Installation WALL SHINGLES

A GUIDE FOR: Wall Shingles

First Row: Trim between the ends of bearers to enable the fixing of a starter strip and the first shingle plank. The Starter Strip shall be a 35mm x 9.5mm strip of Weathertex Weatherboard fixed 25mm up from the datum. Align base of the first shingle with datum line. Fix bottom edge through the starter strip into the timber framing.

Successive Rows: Use the storey rod or lap gauge to position shingles with a minimum lap cover of 40mm. Maintain uniform rows and check rows for level.

Fastening: Nail shingles to timber frames with Weathertex nails. Use screws when fixing to metal frames. Refer to "Accessories" for fastener types and sizes.

At laps, fasten through both shingles into the stud. Use one nail per stud, located at least 12mm from edges and ends. Drive nails flush with surface. No punching or stopping up is required.

Joining: Form joins progressively with 6mm joiners that fit the rebated shingle ends. Do not force ends tightly together. Where possible, locate joins over studs and fasten ends as shown. If joining between studs, fasten each adjoining shingle to at least two studs. Stagger joins throughout the wall.



Installation WEATHERGROOVE

A GUIDE FOR: Smooth, Ruff-Sawn, Woodsman

Preparation: For general framing and construction details refer to "General Requirements".

Plan sheet layout with long edges vertical and located off stud or provide frame support for all sheet edges. If the vertical joints are to be formed between studs, then sheet edges must be supported with Weathergroove Joiner over noggings at 750mm maximum centres.

Establish a horizontal datum or base line at least 6mm below the base of the frame and mark with nails and string line.

Fixing detail for Bracing and Weathergroove:

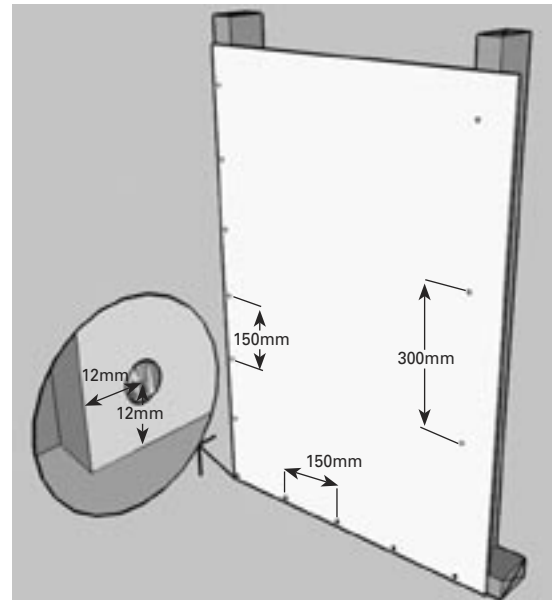
1. Stud spacing is maximum 600mm centres.
2. Nails are 50mm x 2.8mm galvanised Weathertex nails (hand driven) or 45mm x 2.5mm ring-shanked, flat-head, galvanised gun nails (Duo-fast C25 -45-RGD or equivalent).
3. Nailing detail in each corner of each sheet as shown. Nailing shall be no closer than 12mm from the sheet edges and must not be in the grooves of grooved sheets.
4. Off-stud joins are made using the relevant joiner over noggings at maximum 750mm centres.

Joining:

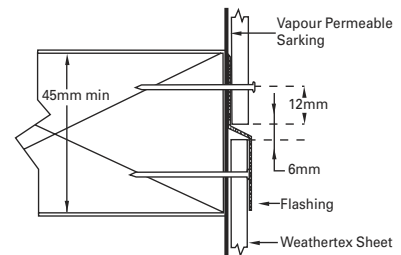
VERTICAL JOINS

May be formed using Weathergroove Joiner as specified in "Accessories". This joiner will provide the necessary clearance to accommodate movement.

Weathergroove has unique rebated edges for joining with the Weathergroove Joiner, the exposed surface of which are the same width as the grooves in the sheet. Joints may occur over studs or between studs to combine with the sheet grooves and maintain a regular vertical Weatherboard effect.



Note: Grooves in Weathergroove are omitted for clarity of drawing.



HORIZONTAL JOINS USING ALUMINIUM FLASHING

For horizontal joints, use the Aluminium Z Flashing. The horizontal joints must be supported by noggings.



Step 1

Step 2

Step 3

Step 4

Note: Weathergroove Woodsman shown. Direct fix method shown. In the interest of clarity cavity fixing method and vapour permeable sarking have been omitted.

USING TIMBER BATTENS

Horizontal joint should be located over noggings. Provide 6mm minimum clearance between sheet ends and waterproof with flashing. Cover with timber batten as required.

Installation EXTERIORBOARD

A GUIDE FOR: Smooth, Woodsman

ExteriorBoard installation requires the use of the ExteriorBoard Deep Channel Joiner. The following installation instructions MUST be followed:

1. The stud frame must be arranged so that all edges of the ExteriorBoard and the Deep Channel Joiner are supported on double studs and double noggings. The joiner is to be centered on the studs and noggings.
2. **Any cut ends of Weathertex must be primed with a solvent-based exterior wood primer or an acrylic tannin resistant wood primer.**
3. Position the vertical Deep Channel Joiner over the entire height of the wall. Position smaller horizontal Deep Channel Joiners so that the channel meets the vertical joiner channel, but does not run across it. Channels are to run vertically without the possibility of water pooling at a junction point. The joiner should be fixed in place using 25mm flat head nails. The joiner will be held firmly in place by the sheet fixings. **Do not nail gun fix the ExteriorBoard Deep Channel Joiner as this will damage the joiner.**
4. Prior to the placement of the sheet, run a 5mm bead of quality, flexible, paintable sealant (Silkaflex PRO 2HP or Super Seal HPR25) into the corner of the Deep Channel Joiner.
5. Push the ExteriorBoard into the sealant so that the sealant is evenly distributed around the edges of the sheet, and the sheet fits flush with the Deep Channel Joiner. Ensure that there is enough sealant to completely fill the exposed joiner to board joint. Excess sealant extruding from the joint can be wiped/cut off before the sealant sets.
6. Commence fixing using recommended pattern. Fixings are to be positioned at spacings of 150mm around the perimeter of the sheet with fixings at 300mm centres throughout the sheet on all available studs and noggings. Fixings must be positioned a minimum 12mm from the edge of the sheet.

Fixings can be Weathertex nails or screws. For best results, use a minimum 35mm screw with countersunk head (AS3566, Class 3). Pre drill holes and provide a 2mm countersink. Fill holes with a high quality proprietary grade paintable filler.

Note of caution: Deep Channel Joiner may become permanently deformed if allowed to bend. Store in a flat position to protect the channel ribs.



Step 1



Step 2



Step 3



* Refer to the Weathertex website for the Weathertex 10 year Manufacturer's Warranty.

Installation **IMPACTBOARD**

Weathertex ImpactBoard has long routed edges which allows the ImpactBoard joiner to be used both on and off stud to create a seamless, concealed join. ImpactBoard is designed for high-impact internal lining applications, it is durable and impact resistant with a guaranteed minimum density rating of 1025kg/m³.

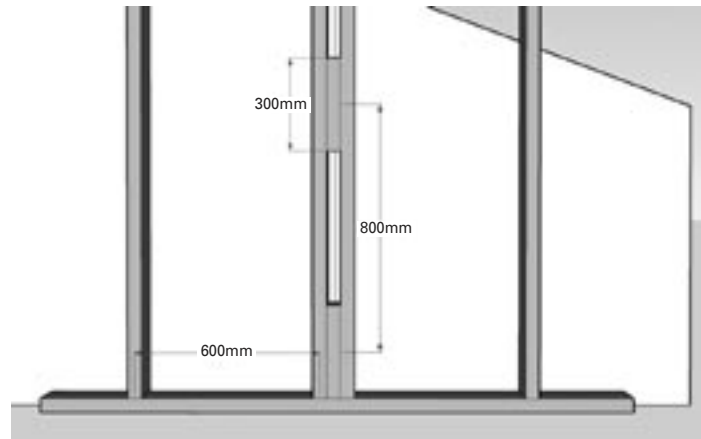
CONSTRUCTION

Preparation: For general framing and construction details refer to "General Requirements".

Plan sheet layout with long, recessed edges vertical and located on a stud cluster. The stud cluster should be prepared with 300 x 45 x 90mm packers fixed at 800mm centres up the height of the 2 studs.

The vertical edge of each ImpactBoard sheet should line up with the centre of the packers between the studs.

Joining: Vertical joints must be formed on a stud cluster according to the diagram below.

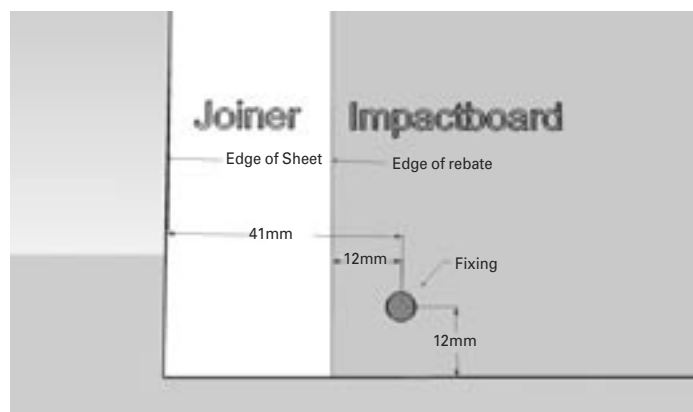


ImpactBoard has unique rebated edges to create a flush appearance when joining with the Joiner, the dimensions of which are the same as the rebates on the sheet edge.

The ImpactBoard Joiner when clipped onto the rebated vertical edge of the sheet should fit flush onto the edge. Working from one side of the wall to the other, fix the first sheet into place. The Joiner should then be installed onto the first sheet before the second sheet is inserted into the joiner and then fixed and so on.

Corners: In addition to the Joiner, Weathertex also provides an external and internal corner specifically designed to fit onto the recessed vertical edge of the ImpactBoard to create flush corners. The corner should be clipped over the recessed edge of the sheet.

Fixing Detail: Fix nails or screws (see Fixing) to each stud and nogging according to the Weathergroove fixing detail. Maintain a 12mm clearance from the top and bottom of the sheet as well as from the rebated edge as shown below.



MANUFACTURER'S 25 YEAR WARRANTIES

1. Weathertex Pty Ltd A.B.N 67 084 713 986 ("Weathertex") warrants that the Products supplied are of first quality, free from defect in material, design and workmanship, and in conformity with the technical specifications detailed in the published Weathertex Installation Guide that is current at the date of purchase.
2. Weathertex warrants that the Products will not rot, split or crack for a period of 25 (twenty five) years from the date of purchase when installed, used and maintained in accordance with Weathertex's current published materials. This warranty applies only where the Products are used in buildings as defined in the Building Code of Australia (BCA), Class 1 to 10a inclusive, but does not apply where the Products are used in other circumstances, including the uses referred to in BCA Class 10b or miscellaneous uses not covered by the BCA (or equivalent in other countries).
3. A reference to Products in these warranty terms and conditions do not include accessory products listed "Accessories" in the Weathertex Price List ("Accessory Products"). Weathertex warrants that the Accessory Products will be free from defect in material and workmanship for a period of 7 years from the date of purchase for the purpose of clarity, the warranties provided in clause 1 and 2 do not apply to Accessory Products.

CONDITIONS OF THE WARRANTY

4. The warranties provided in clauses 1, 2 and 3 are only available to the original purchaser ("Purchaser") who provides Weathertex with proof of purchase and who makes the claim in writing within 30 days from when the defect becomes apparent or should have become apparent.
5. Weathertex will not be liable for any warranty claims made under clauses 1 and 2 if any of the following apply:
 - (a) the Products are not installed used or maintained in accordance with applicable instructions and/or specifications, including installation and site conditions provided by Weathertex.
 - (b) the building in which the Products are installed does not comply with all relevant Building Codes and Regulations, Standards, and Council requirements;
 - (c) the Purchaser has not complied with any service instructions which Weathertex may give or any subsequent request as to a modification of the Products which Weathertex may make from time to time in writing;
 - (d) the defect is caused by the use of materials, parts or accessory products that are not supplied, recommended, or approved by Weathertex;
 - (e) the Products are not maintained, prepared or installed by authorised installation contractors in circumstances where Weathertex has directed the Purchaser to ensure that the Products are maintained, prepared or installed by such authorised installation contractors; or
 - (f) the repair, rectification or replacement of the Products has been required as a result of normal wear and tear or necessitated in whole or in part by the fault or negligence of any person other than Weathertex.
6. Further to clause 5 and without limiting clause 5, Weathertex, under no circumstances will be liable for any claims, damages, or defects arising from or in any way attributable to:
 - (a) acts of God, fire, flood or other severe weather conditions or unusual climatic conditions;
 - (b) performance of paint/coatings applied to the Products;
 - (c) development of any algae, bacteria or fungi on the Products (whether on the exposed or unexposed surfaces);
 - (d) poor workmanship; or
 - (e) any other losses or damages (whether direct or indirect) including property damage or personal injury, consequential loss, economic loss or loss of profits arising in contract or negligence.

REMEDIES

7. Should the Purchaser's warranty claim be made under clauses 1 and/or 2 be valid, then the remedy provided by Weathertex will be limited to either of the following as chosen by Weathertex:
 - (a) Weathertex replacing the Products provided the claim

is accepted by Weathertex and subject to such replacement Products being available in the manufacturing inventory at the time the claim is accepted by Weathertex. Otherwise Weathertex will provide such replacement Products when they become available. The cost of replacing the Products being, at all material times, limited to the following sliding scale as in Table 1:

(b) Weathertex repairing the Products provided the claim is accepted by Weathertex and subject to the cost of repairing the Products being, at all material times, limited to the following sliding scale as in Table 1:

Table 1: Sliding Scale of Warranty Repair Costs

Years of Service (commencing on the date of purchase)	Limit of Warranty Repair Costs covered subject to Claim being accepted
0 to 7 Years	100% of replacement/repairing costs covered by Weathertex
8 to 15 Years	50% of replacement/repairing costs covered by Weathertex
16 to 25 Years	25% of replacement/repairing costs covered by Weathertex

8. Should the Purchaser's warranty claim be made under clause 3 be valid, then the remedy provided by Weathertex will be limited to Weathertex replacing the Accessory Products provided the claim is accepted by Weathertex and subject to such replacement Accessory Products being available in the manufacturing inventory at the time the claim is accepted by Weathertex. Otherwise Weathertex will provide such replacement Accessory Products when they become available.
9. The Purchaser is not entitled to any other remedies with respect to a warranty claim.
10. Any replacement works will be conducted in accordance with the Building Codes and Regulations, Standards, and Council requirements applicable at the time of construction. Where the Building Codes and Regulations, Standards, and Council requirements have changed after the Products were purchased, Weathertex will not be responsible for any costs associated with ensuring that the replacement works comply with the updated Building Codes and Regulations, Standards, and Council requirements.
11. Where an approved claim requires re-coating of the Products the Purchaser acknowledges and agrees to accept minor colour variations between the existing or original colour and the re-coated replacement Products.
12. Except as provided for in these terms and to the fullest extent permitted by law, all terms, statements, warranties and conditions whether express, implied, statutory or otherwise, relating to the subject matter of these terms or to these terms generally are excluded. Nothing contained herein excludes or modifies any rights the Purchaser may have under the Australian Trade Practices Act 1974 (Cth) (or equivalent in other countries).

DISCLAIMER

13. Recommendations made by Weathertex are based on good building practice and are not a complete statement of all relevant data. As the installation of the Products rely on factors outside the control of Weathertex, Weathertex assumes no responsibility for works/systems used in connection with the installation of the Products and their suitability to satisfy relevant Building Codes and Regulations, Standards, and Council requirements.
14. Unless specifically stated otherwise, this warranty applies to Weathertex products purchased and installed in Australia only.
15. This 25 (twenty-five) year warranty excludes Weathertex ExteriorBoard. Weathertex ExteriorBoard is covered by a 10 (ten) year warranty when installed as directed. For full details on the Weathertex ExteriorBoard 10 (ten) year warranty go to www.weathertex.com.au

Weathertex Quick Product Range Reference Guide

Product	Profile	Size (mm)	Joiners
WEATHERTEX WEATHERBOARDS			
Classic	Smooth	3660 x 200, 300	200 or 300 Off Stud Joiner, 200 Concealed Joiner
	Ruff-Sawn	3660 x 200, 300	200 Woodgrain Joiner, 200 Concealed Joiner, 300 Off Stud Joiner
	Ruff-X	3660 X 200	200 Woodgrain Joiner, 200 Concealed Joiner
Rusticated	Smooth	3660 x 200	Rusticated Smooth Joiner
	Ruff-Sawn	3660 x 200	Rusticated Ruff-Sawn Joiner
NOTE: All Weathertex Weatherboards are designed to suit Large External Aluminium Corner and Large Internal Aluminium Corner.			
Recommended Nail: 50mm x 2.8mm Weathertex Nail			
SELFLOK WEATHERBOARDS			
Millwood	Smooth	3660 x 300	Millwood Smooth Joiner, 300 Concealed Joiner
	Ruff-Sawn	3660 x 300	Millwood Ruff-Sawn Joiner, 300 Concealed Joiner
Old Colonial	Smooth	3660 x 300	Old Colonial Joiner, 300 Concealed Joiner
NOTE: All Selflok Weatherboards are designed to suit Small External Aluminium Corner and Small Internal Aluminium Corner.			
Recommended Nail: 50mm x 2.8mm Weathertex Nail			
PRIMELOK WEATHERBOARDS			Recommended use of Primelok Starter Strip
Classic	Smooth	3660 x 200	200 Off Stud Joiner, 200 Concealed Joiner
	Ruff-Sawn	3660 x 200	200 Woodgrain Joiner, 200 Concealed Joiner
Braidwood	Smooth	3660 x 200	Braidwood Smooth Joiner, 200 Concealed Joiner
	Ruff-Sawn	3660 x 200	Braidwood Ruff-Sawn Joiner, 200 Concealed Joiner
Federation	Smooth	3660 x 170	Federation Smooth Joiner, 170 Concealed Joiner
	Ruff-Sawn	3660 x 170	Federation Ruff-Sawn Joiner, 170 Concealed Joiner
Shadowood	Smooth	3660 x 170	170 Concealed Joiner
NOTE: All Primelok Weatherboards are designed to suit Large External Aluminium Corner and Large Internal Aluminium Corner.			
Recommended Nail: 50mm x 2.8mm Flat Head Galvanised Nail			
WEATHERTEX SHINGLES			
Shingles	Ruff-Sawn	1195 x 225	Wall Shingle Joiner
Recommended Nail: 50mm x 2.8mm Weathertex Nail			
ARCHITECTURAL PANELS			
ExteriorBoard	Woodsman (MTO) Smooth	3660 x 1220	ExteriorBoard Deep Channel Joiner
		3660 x 1220, 3050 x 1220	ExteriorBoard Deep Channel Joiner
		2745 x 1220, 1830 x 1220	
		1220 x 1220, 915 x 1220	
Weathergroove	Smooth	3660 x 1196, 3050 x 1196	Weathergroove Joiner: 3660, 3050, 2745 and 2440
		2745 x 1196, 2440 x 1196	Aluminium Z Flashing
	Ruff-Sawn	3660 x 1196, 3050 x 1196	Weathergroove Joiner: 3660, 3050, 2745 and 2440
		2745 x 1196, 2440 x 1196	Aluminium Z Flashing
	Woodsman	3660 x 1196, 3050 x 1196	Weathergroove Joiner: 3660, 3050, 2745 and 2440
		2745 x 1196, 2440 x 1196	Aluminium Z Flashing
ImpactBoard	Smooth	3660 x 1220	ImpactBoard Joiner
NOTE: All Architectural Panels are designed to suit Small External Aluminium Corner and Small Internal Aluminium Corner.			
Recommended Nail: Flat Head Nail 50mm x 2.8mm			



Timber made perfect™



* Refer to the Weathertex Manufacturer's Warranty Conditions

Ph: 1800 040 080 Fax: 1800 647 926 www.weathertex.com.au

"Weathertex", "Primelok" and "Selflok" are registered trademarks of Weathertex Pty Ltd. ABN 67 084 713 986

The information in this manual related to Weathertex's product as developed and manufactured at the time of printing. Importantly, Weathertex follows a policy of continuous product testing and improvement. For this and other reasons Weathertex reserves the right to make any changes or modifications to this manual and any other relevant document as and when it considers necessary and without notice. Accordingly, users of Weathertex's products are encouraged to regularly contact Weathertex to obtain the current manual.