

**For More Information  
BGC Branch Offices**  
[www.bgcplasterboard.com.au](http://www.bgcplasterboard.com.au)

#### Head Office Perth WA

290 Bushmead Road, Hazelmere, Western Australia, 6055  
Telephone: (08) 9374 2900 Facsimile: (08) 9374 2901  
Postal Address: P.O. Box 1948, Midland DC, Western Australia 6936

#### Adelaide

978 Port Road, Albert Park, South Australia, 5014  
Telephone: (08) 8347 0844 Facsimile: (08) 8347 3122

#### Melbourne

200 - 238 Maidstone Street, Altona, Victoria 3018  
Telephone: (03) 9392 9444 Facsimile: (03) 9392 9404

#### Sydney

32 - 34 Pine Road, Yennora, New South Wales 2161  
Telephone: (02) 9632 2100 Facsimile: (02) 9632 2144

#### Brisbane

39 Gardens Drive, Willawong, Queensland 4110  
Telephone: (07) 3711 4744 Facsimile: (07) 3711 4666

#### Warranty

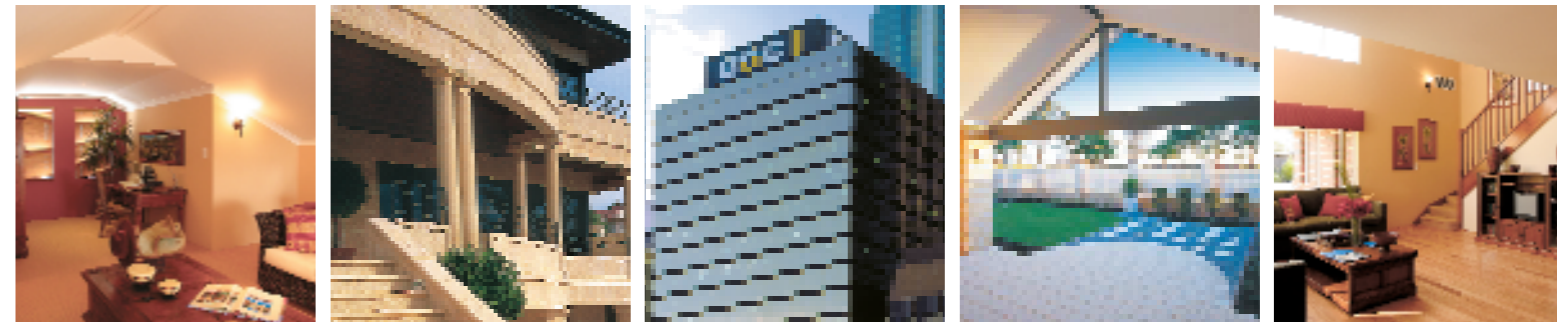
BGC warrants its products to be free from defects caused by faulty manufacture or materials. If any of its products are so defective the Company will at its option, repair or replace them, supply equivalent replacement or reimburse the purchase price.

This warranty shall not apply to any loss or consequential loss suffered through or resulting from defects caused by faulty manufacture or materials.

The propriety joint and coating systems are outside the control of BGC, therefore the independent joint and coating manufacturers must give all warranties for the jointing system performance.

# Installation Manual

## PLASTER BOARD - CEILINGBOARD - CORNERS



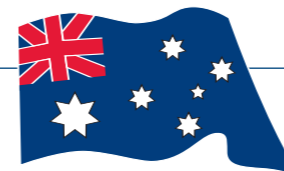
Produced by BGC Plasterboard ABN 62 005 736 005 020 Copyright.

™ Denotes a trademark owned by BGC Australia Pty Ltd.

Supersedes all previous publications.



A Product of Advanced Technology



Performance Based Products

## BGC Plasterboard

Before commissioning a Plasterboard plant in Australia, BGC researched the world's foremost plasterboard manufacturing countries, in order to adopt the most advanced production techniques, available today.

Our highly professional team of engineers and skilled personnel maintain world class plant and equipment at our Western Australian factory premises and, together with the Company's pursuance of manufacturing excellence, assures the specifying and building industry of quality BGC Plasterboard products.

As a wholly owned, privately operated Australian company, BGC recognises the importance of product Research and Development programmes. Continued investment into this discipline ensures BGC will remain a leader in the manufacturing and supply of quality building products and materials.



## BGC (Australia) Pty Ltd

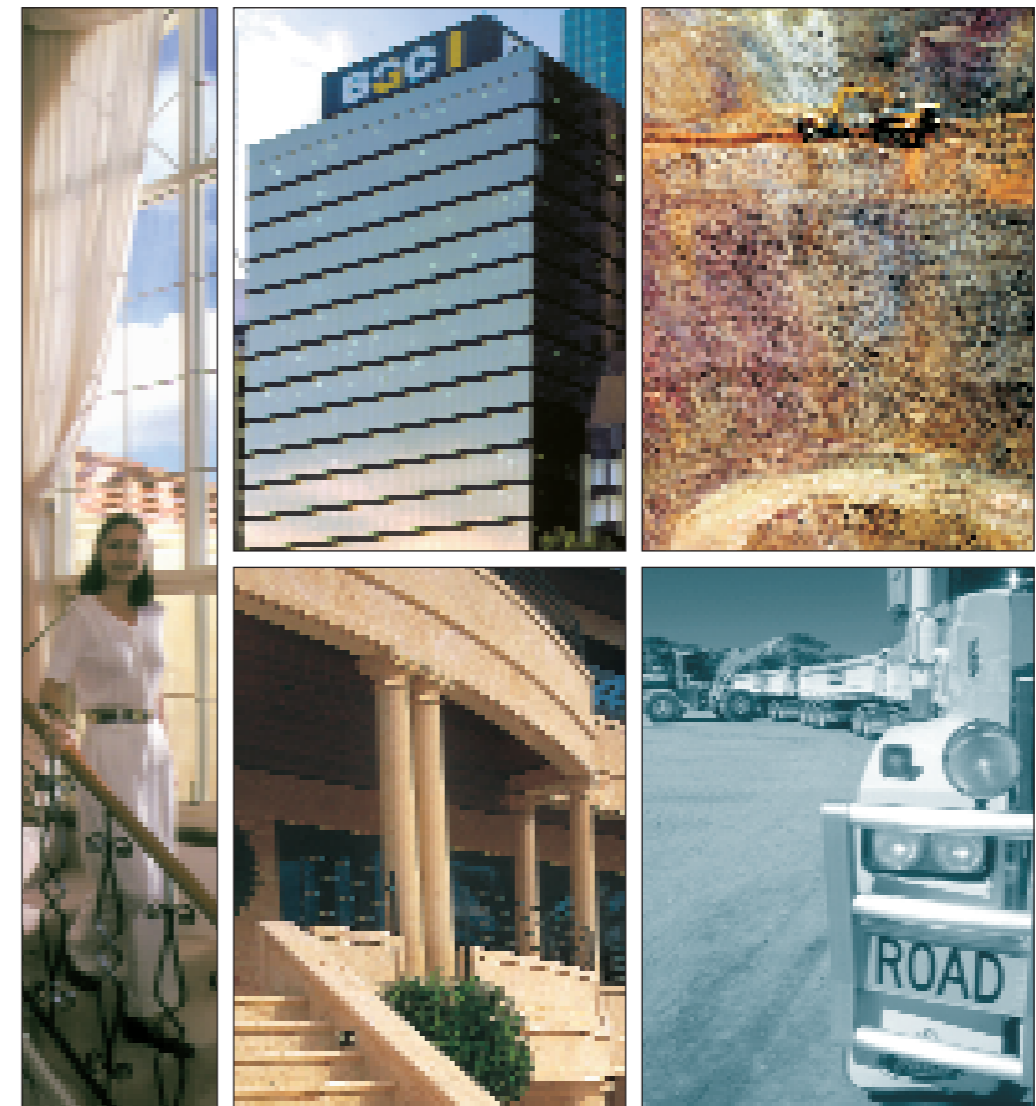
BGC (Buckeridge Group of Companies), has developed into a diversified industrial group with an annual turnover that makes it one of Australia's largest, privately - owned companies.

Its wide range of operations includes manufacturing, residential and commercial building, property ownership and management, contract mining, bulk haulage, quarrying and insurance. It is the largest residential building company in Western Australia, and one of the biggest in the nation.

A decentralised management structure allows each of the autonomous business units the flexibility to make individual business decisions, along with the knowledge and backing of sound corporate experience.

The West Australian - based group has operations in each of Australia's mainland states with an international reach that extends to New Zealand and South East Asia. BGC is also exporting its products to growing markets in both Singapore and Hong Kong.

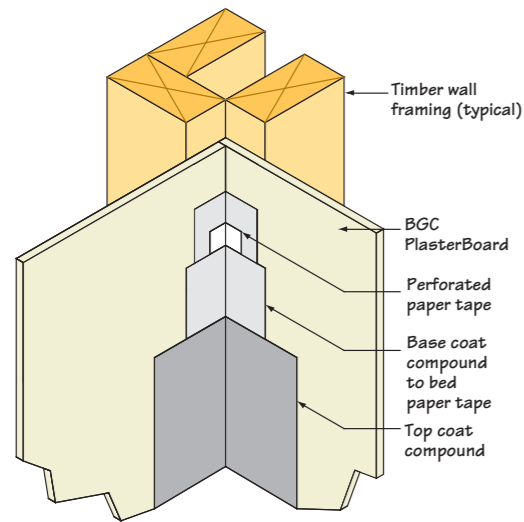
BGC stands by its quality, commitment and capacity to provide outstanding results for any building activity.



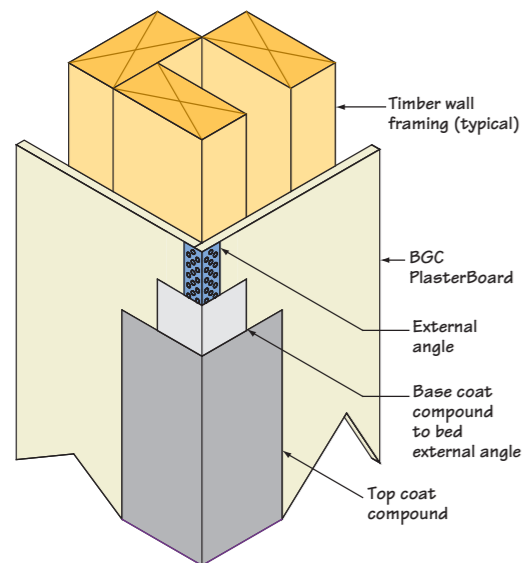




## Internal Corner Detail



## External Corner Detail



## Decoration

- **Note:** BGC Plasterboard does not recommend spray painting ceilings to achieve level 4 or higher finish.
- Ensure all stopping of joints and nail holes is completed to AS/NZ 2589.1:1997
- Brush down area prior to painting to ensure board is free from sanding dust.
- Roller apply a proprietary branded quality sealer, to the entire sheet area including joints, followed by two coats of full weight flat acrylic paint.
- Choice of colour should be considered carefully - darker colours will exacerbate any defects and highlight any imperfections.
- Where high humidity is of concern, ensure the chosen painting system will protect joints from moisture absorption.

## Installation

BGC Plasterboard recommends that this section should be read in conjunction with the architects' specifications to determine the Level of Finishes.

BGC PlasterBoard should be installed after all preceding trades have been completed.

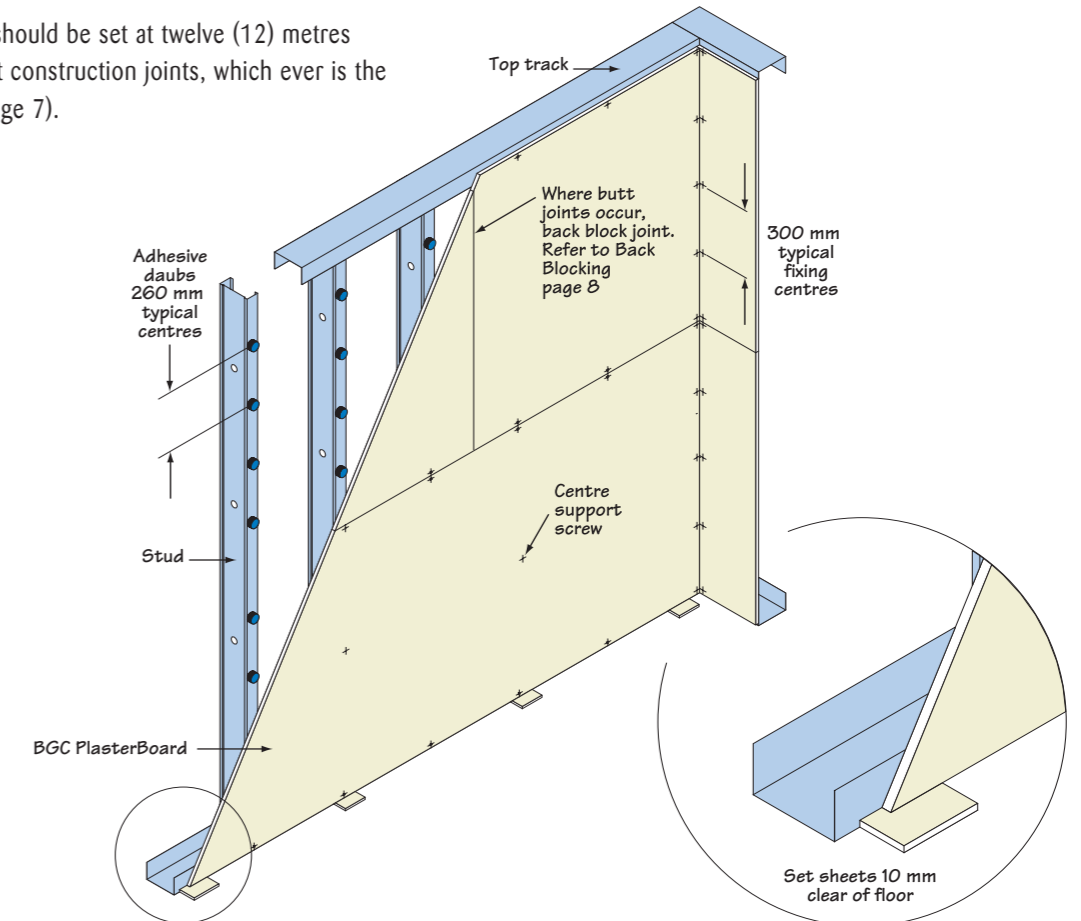
Ceilings should be installed first. BGC CeilingBoard should preferably be fixed with their long edges perpendicular to the windows or light sources, to obviate unwanted light reflections across the joints.

For the walls, BGC PlasterBoard sheets should be laid with their long edges horizontal, to minimise the number of joints as well as light reflections across the joints. This is most important when Finish Levels 3, 4 or 5 are specified, as indicated in Table 2 page 6.

BGC PlasterBoard may be cut by scoring the face side and snapping back away from the score. Then cut the paper face on the second side following the original score line. Neat straight cuts can be made using a straight edge.

The cut edges should be sanded smooth to form clean joints.

Control joints should be set at twelve (12) metres maximum, or at construction joints, whichever is the lesser (refer page 7).



## Framing

BGC PlasterBoard may be fixed to timber, CFS light-steel framing or furring channels, which satisfy the BCA requirements and which have been plumbed true and straight.

Timber framing must comply with the requirement of AS1684 'National Timber Framing Code' and AS1720.1-1997 'Timber Structures' and have a moisture content less than 16% at time of lining.

CFS light-steel framing must be in accordance with AS4600 'Cold-Formed Steel Structure Code', AS3623-1993 'Domestic Metal Framing' and AS1397-2001.

BGC PlasterBoard may be fixed to CFS steel framing not exceeding 1.25mm BMT.

Framing members must have a 35mm minimum face width for nail fixing and 32mm for screw fixing.

## Framing Cont...

Frames must be plumbed true and straight, to comply with the degree of finish required of the BGC PlasterBoard.

The tolerance deviation over 1.8m spans, along and across members, for 90% of the wall framing, shall be as set out in Table 2.

**Table 2**

Level of Finish	Max Frame Alignment Deviation
Class 3	5 mm (1/360)
Class 4	4 mm (1/450)
Class 5	3 mm (1/600)

Maximum spacing of framing members depends on the structural requirements for the building, in accordance with AS1170 and AS4055, however the maximum allowable spacing for studs, joists, furring channels or battens shall be as set out in the Table 3.

**Table 3**

BGC PlasterBoard	Application	Max. Spacing of Framing Member
BGC PlasterBoard 10mm Recessed Edge	Walls	600 mm
	Ceiling	450 mm
BGC CeilingBoard 10mm Recessed Edge	Walls	600 mm
	Ceiling	600 mm
BGC PlasterBoard 13mm Recessed Edge	Walls	600 mm
	Ceiling	600 mm
BGC WR PlasterBoard 10mm Recessed Edge	Walls	600 mm
	Ceiling	600 mm
BGC WR PlasterBoard 13mm Recessed Edge	Walls	600 mm
	Ceiling	600 mm

Trimmers are to be used where the main structural members change direction and all openings must be framed.

## Adhesive, Nails or Screws

BGC PlasterBoard may be fixed to the framing with either adhesive, nails or screws as appropriate.

Water-based acrylic gypsum plaster adhesives, which comply with AS2753, are suitable for fixing BGC PlasterBoard to both metal and timber framing.

Adhesive fixing is used in conjunction with fasteners, except for wet and tiled areas, fire-rated construction, over vapour-barriers or existing work, where mechanical fasteners, nails or screws must be used.

The position of daubs of adhesive 'O' and permanent fasteners 'X' should be as set out as shown in the Table 4.

**Table 4**

Position & Number of Adhesive Daubs and Fasteners Across Sheet			
Sheet Width	Wall	Ceilings	Ceilings
1200	XOOOOX	XOOXXOOX	XOXOXOX
1350	XOOOOOX	XOOXXOOX	XOXOXOX

Ensure that contact surfaces are free from grease, oil, dust or other loose material prior to placing adhesive daubs (always clean down steel furring before fixing PlasterBoard sheeting).

Galvanised 2.8mm standard or ring-shank clouts are used to fix the BGC PlasterBoard to timber, see Table 5.

**Table 5**

Minimum Nail Fastener Length		
Sheet Thickness	Hardwood	Softwood
10mm	30mm	30mm
13mm	30mm	40mm

Needle-point (NP) or self drilling and tapping point (SDP), bugle-head screws are used to fix to CFS light steel framing, and must comply with AS3566, see Table 6.

**Table 6**

Minimum Screw FASTER Length and Type		
Sheet Thickness	CFS Steel up to 0.55 BMT	CFS Steel 0.75 to 1.1 BMT
10 mm	6-9 x 25 NP	6-18 x 25 SDP
13 mm	6-9 x 30 NP	6-18 x 30 SDP

Note: When fixing into preservative treated timbers, **Class A** AS 3566 coatings of screws and nails are to be used.

## Jointing Application

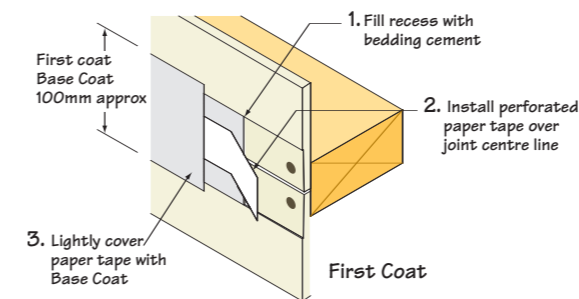
Paper tape joints produce stronger and more enduring results than those that are set with fibreglass tapes.

BGC Plasterboard recommends the use of paper tapes.

- Self-adhesive paper tapes should not be used.
- Where fibreglass tape joints are used, they must be back blocked before the joints are set (in accordance with the instructions set out in Back Blocking, page 8).

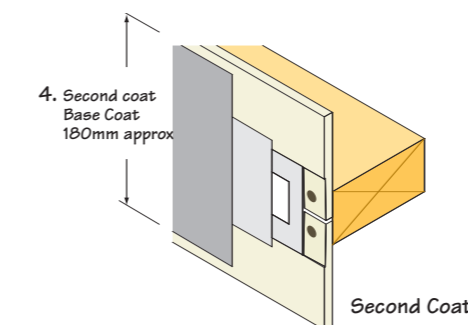
## Tape & First Coat

- Apply the Base Coat bedding cement to fully fill the recess of the joint.
- Centrally bed the perforated paper tape into bedding coat, cement and cover lightly with Base Coat.
- Stop-up all fixing points and apply Base Coat to any damaged areas.
- Allow the Base Coat to set and dry for a minimum of 24 hours or 1 hour for setting type cements (or as per compound manufacturers recommendation).



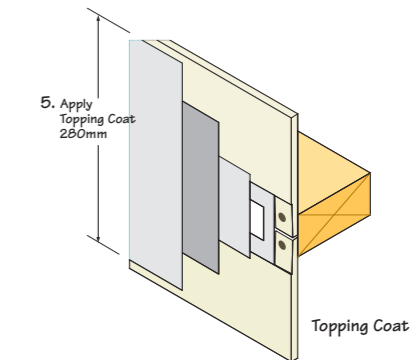
## Second Coat

- Lightly sand the first coat.
- Check the Level of Finish required in the architects' specification, before applying the second coat as detailed in Table 2 and PlasterBoard Finish Selection (page 3), for the correct Finish Coat required.
- Apply the second Base Coat 180mm wide over the joints, making sure to feather out the edges.
- Apply a second coat to all fasteners and damaged areas, feathering out by about 25mm
- Allow the second coat to set and dry for a minimum of 24 hours or 1 hour for setting type cements (or as per compound manufacturers recommendation)..



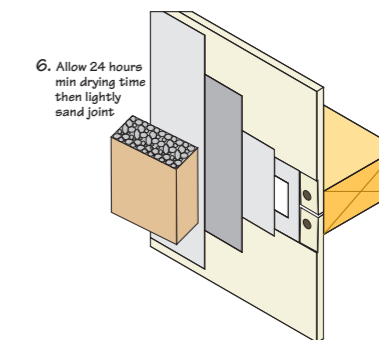
## Finish Coat

- Lightly sand the second coat.
  - Apply a thin finish coat, centrally over second coat, after it has set and hardened.
- Dampen the outer edges of the Finish Coat, with a sponge to feather out the Finish Coat about 280mm wide.
- Apply a thin Finish Coat over all fasteners and damaged areas,



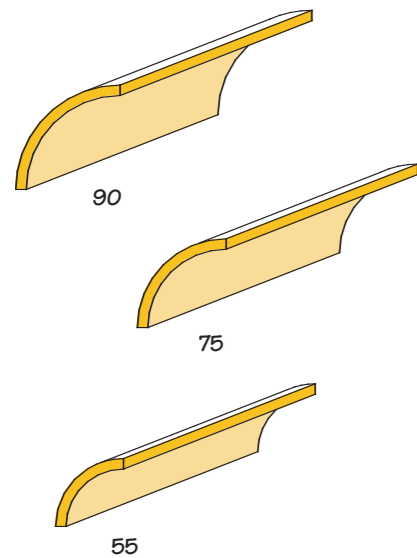
## Sanding and Finishing

- Allow the Finish Coat to dry at least 24 hours.
- Lightly sand smooth with 150 grit paper or with 220 sanding mesh.
- Wipe off excess dust with a slightly damp cloth.



BGC PlasterBoard will perform to the architects' specification and the Australian Building Codes, provided all procedures are followed as per the compound manufacturers' specification.

## BGC Cove Cornice



BGC Plasterboard cove cornice is designed to give a clean continuous line at the junction of walls and ceilings, and can be used with confidence on both PlasterBoard lining and cement plastered walls alike.

BGC Plasterboard cove cornice is made of a plaster core with paper face to complement BGC PlasterBoard Ceilingboard, Cove is fixed using a proprietary branded cornice cement with few special tools required.

The use of a mitre box and hand saw for cutting internal and external corner mitres is recommended.

### Availability Table 7

Size	Lengths mm				
	3000	3600	4200	4800	5400
55mm	✓	✓	✓	✓	✓
75mm	✓	✓	✓	✓	
90mm	✓	✓	✓	✓	✓

## Fixing

- Clean down area where cornice is to be applied, remove any excess render or loose material.
- Mark a guide line to suite the bottom edge of the cornice (90, 75 or 55 down) and pre-cut lengths as required.
- All corner joints, internal and external, are to be mitred.
- Where butt joints are unavoidable, ensure both ends are prepared to align accurately.
- Apply (butter) a 10mm bead of cornice cement to both long edges and ends of the cornice.
- Locate cornice to guide lines and temporarily block as required.
- Fill mitres, cleaning off excess cement as you go.
- Remove temp blocking after cornice cement has set (as specified by cement manufacturer).
- Apply second topping coat to mitres and joints as required. **Note:** only ever butter one length at a time and install immediately.

Contact surface may require damping down prior to fixing cornice, depending on drying conditions.

## Adhesive Fixing to Framing

### Walls

Daubs of adhesive, 25mm diameter x 15mm high, are positioned in the pattern as shown in Table 4, spaced at a maximum of 300mm and a minimum of 200mm.

Adhesive must not be used at wall-to-wall and wall-to-ceiling junctions, around openings, butt joints or fastener points.

BGC PlasterBoard is placed horizontally along each wall. Sheets to be packed 10mm from floor and fastened along the top recessed edge at each stud or furring channel.

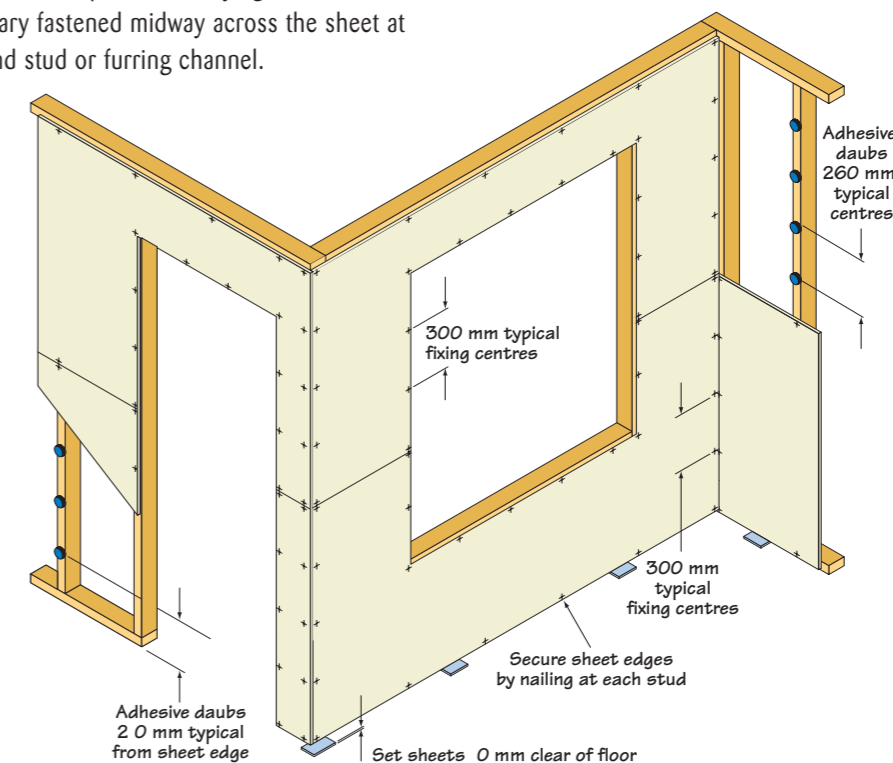
The sheets are then pressed firmly against the studs and temporarily fastened midway across the sheet at every second stud or furring channel.

Next, fasten the other recessed edge at each stud, or furring channel.

Fasteners must not coincide with adhesive daubs, and fasteners should be kept to a minimum distance of 200mm from adhesive daubs.

Fasteners around openings should be placed at a maximum spacing of 300mm centres.

Allow at least 24 hours for the adhesive to set.



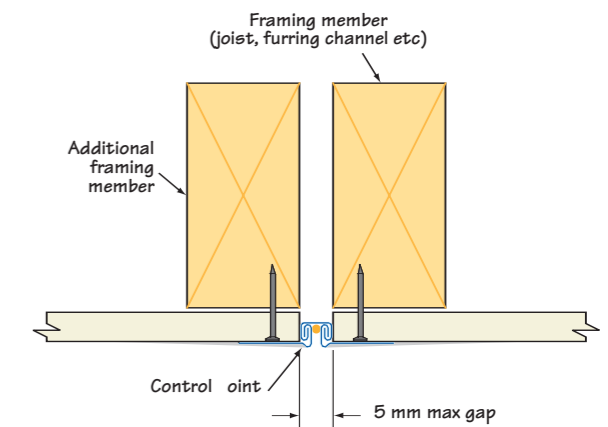
### Control Joints

Control joints must be installed in walls and ceilings at a maximum spacing of 12m, or at control/construction joints, whichever is the lesser.

Architectural features, openings, and the like may be used as control joint set out points.

Rondo 'P35' or MBS 'PXJ-30' are suitable control / expansion joints.

Control joints are centrally located across the 15mm minimum gap between adjacent BGC PlasterBoard sheets, and the flanges nailed at 300mm centres to the framing behind.



## Adhesive Fixing to Framing Cont...

### Ceilings

Adhesive daubs, 25mm dia. x 15mm high, are positioned in the pattern as shown in Table 4, spaced at maximum of 250mm and minimum of 200mm centres.

Adhesive must not be used at wall-to-wall and wall-to-ceiling junctions, around openings, butt joints or fastener points.

BGC CeilingBoards are placed at right angles to the ceiling joists, battens or furring channels, and fastened along one recessed edge at each joist, batten or furring channel.

Next, press the sheets firmly against the framing, and fix two nails (for timber framing) or one screw (for CFS

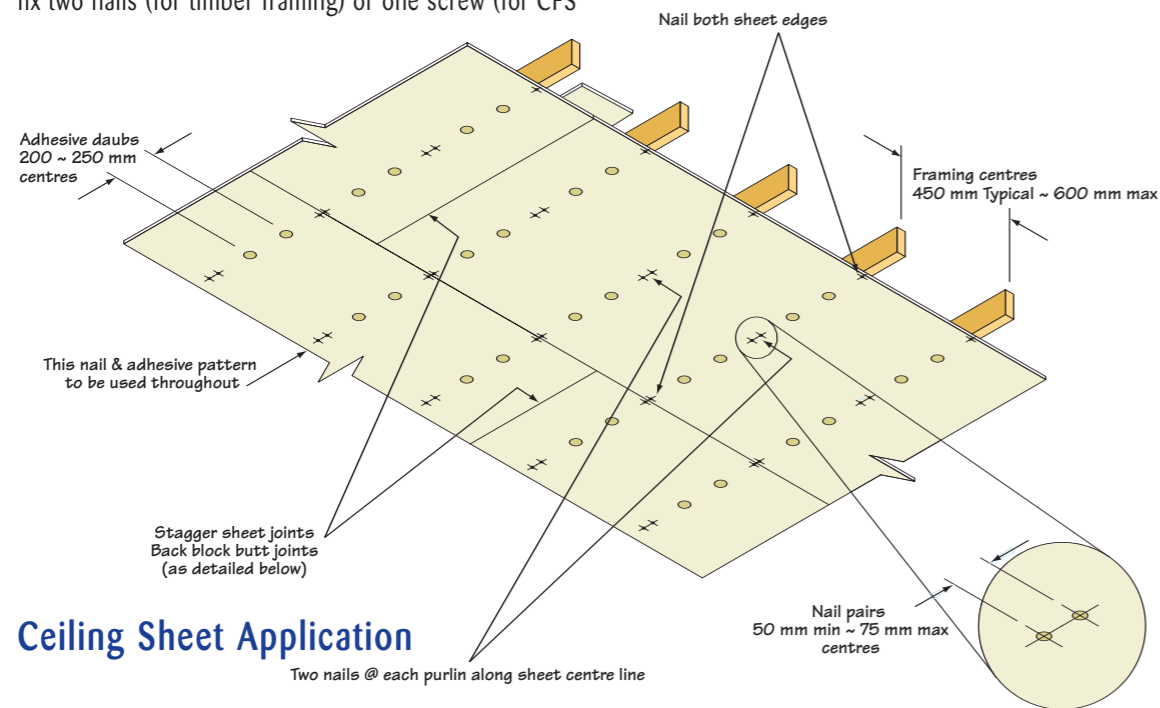
steel framing), along the centre of the sheet at each framing member.

Then, fasten off the sheets along the other recessed edge, at each framing member.

Fasteners must not coincide with adhesive daubs, and fasteners should be kept to a minimum distance of 200mm from adhesive daubs.

Where allowed, fasteners at butt joints and around openings should be placed at a maximum spacing of 150mm for nails and 200mm for screws.

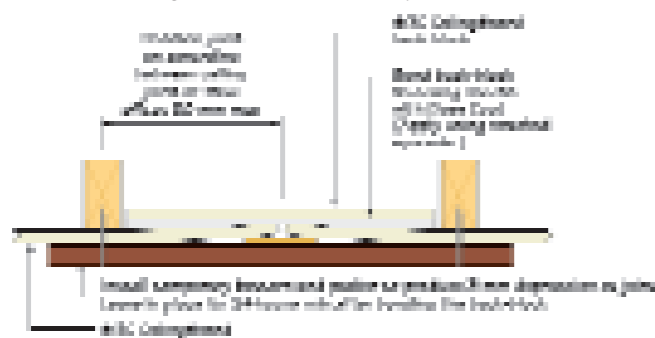
Allow at least 24 hours or 48 hours in slow drying weather, for the adhesive to set.



### Ceiling Sheet Application

### Back Blocked Joints

Back blocking must be done before joints are set.



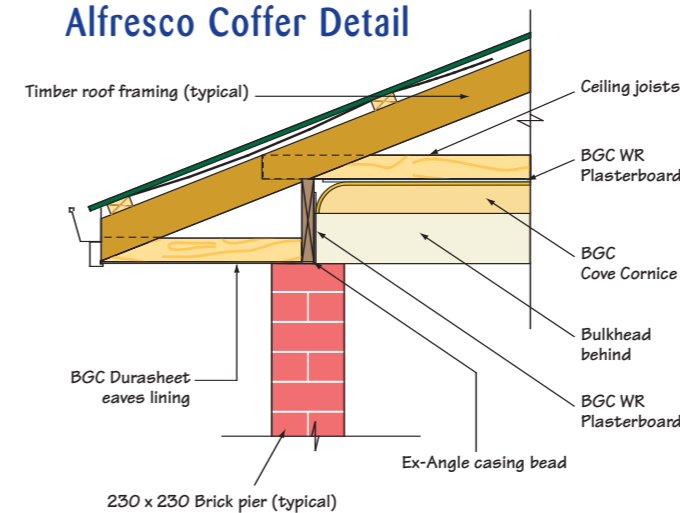
Back-blocking is used to reinforce unsupported butt or recessed joints and must be positioned midway between supporting members, in ceilings and walls. Back blocking must be used in open areas of ceilings (back of recessed joints) with 3 or more joints and where there is a likelihood of excessive shrinkage and movement in the structure.



## Alfresco - Garage - Carport Ceilings

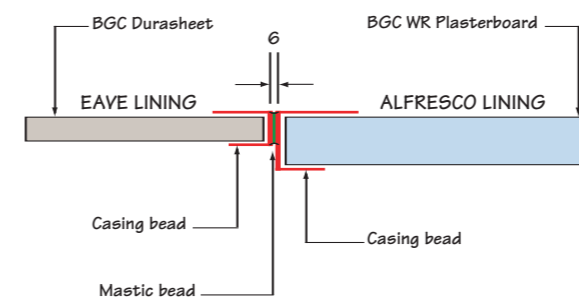
Ceilings to these areas should be given special design considerations due to environmental conditions.

### Alfresco Coffer Detail



### Eaves Details

#### Casing Bead



- Allows for differential movement.

## Alfresco/Carport

- Negative wind loads can unbond adhesive daubs during construction if not fully cured at time of pressure.
- High humidity can result in poor joint performance.

### Garage

- Roller/tilt door operation can result in differential movement due to vibration resulting in positive joint cracking and adhesive unbonding.

While the finish and appearance of these areas remains the same as ceiling in habitable areas additional details are required.

- BGC Plasterboard recommends the use of WR Plasterboard with 1/3 fixings.
- Screw and glue fix only.
- Back-block all joints.
- Use of proprietary branded quality sealer prior to painting.
- Use wet area base coats in jointing system.

#### Timber Stop

